

Sprint MVP

A Large Transport Three-Axis Measurement System

Productivity on the Shop Floor

SprintMVP™ 400/600 is a large capacity, fully automatic, 3 axis dimensional measuring system. A choice of three measuring ranges is available to accommodate a wide range of parts and fixtures. SprintMVP features high precision stages and optics, and a high resolution color camera for crystal clear imaging.

Measurement Range (mm)

Models	X	Y	Z
SprintMVP 400	450	450	150
SprintMVP 400 (With Extended Z-axis)	450	450	300
SprintMVP 600	450	610	150

Features

- Massive granite base for stability
- Precision compound XY stages
- 0.5 micron scales on XY & Z standard
- Fully automatic - 3 axis joystick control
- Versatile Measure-X® software

Optics

- Motorized zoom lens system, with 35x to 175x magnification
- High resolution color camera
- LED backlight, top light and high intensity ring light standard

Options

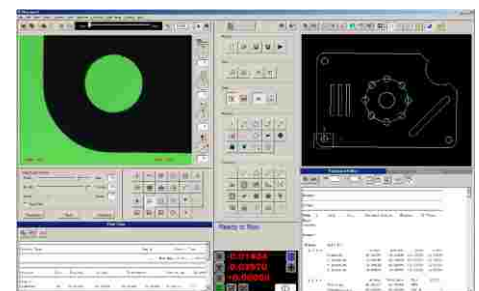
- Renishaw touch probe & change rack
- DRS™ laser
- Rotary indexer
- Digital I/O capability

Software That Makes Measurements Simpler

QVI Measure-X software makes it easy to measure parts or create automatic measurement routines. FeatureFinder® makes it easy to measure any feature in the video window instantly. If CAD files are available, just download the DXF and let Measure-X create the program for you. AutoCorrelate™ lets you stage and measure parts without fixturing.



SprintMVP 400 System

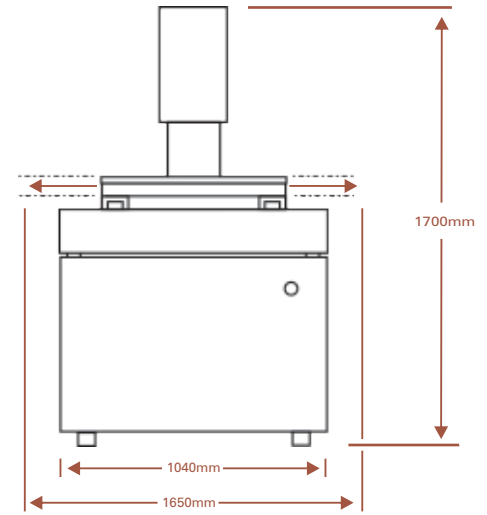


Powerful Measure-X Metrology Software

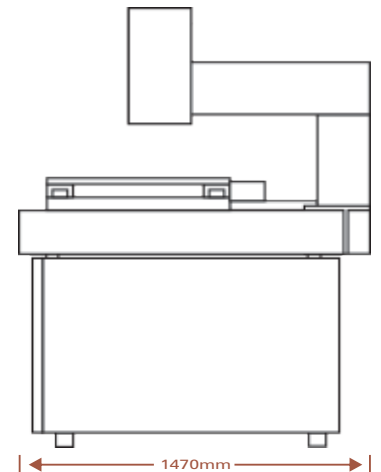


Measuring Unit	400	600
XYZ Travel, mm	450 x 450 x 150 (Optional Extended Z- 300mm)	450 x 610 x 150
XYZ Travel, in	18 x 18 x 6 (Optional Extended Z- 12in)	18 x 24 x 6
System Dimensions, mm (XYZ)	1040 x 1220 x 1700 (Optional Extended Z- 2100mm)	1040 x 1470 x 1700
System Dimensions, in (XYZ)	41 x 48 x 67 (Optional Extended Z- 83in)	41 x 58 x 67
System Weight, kg/lbs	1300 / 2866	1300 / 2866
Shipping Weight, kg/lbs	1346 / 2967	1400 / 3086

X-Y Stage	Precision, motorized compound X-Y stage with 3-axis joystick control. 30 Kg load capacity.
Scale Resolution (XYZ)	0.5 μ m (0.00002")
Optics	6.5:1 motorized zoom lens, working distance of 70mm with standard VectorLight™
Camera	High resolution color camera
Field of View	8.9mm low mag. to 1.8mm high mag. (diagonal)
Optional Auxiliary Lens	0.5x, 0.75x, 1.5x, 2.0x
Illumination	LED VectorLight (six rings, seven sectors), LED backlight, LED surface (square-on), optional full LED VectorLight (six rings, eight sectors)
Controller Minimum Specs	Quad-Core processor, 4 GB RAM, 160 GB hard drive, CD-ROM, parallel, serial and USB ports, and Windows™ Operating System
Software	Measure-X® Metrology Software by QVI®. Optional MeasureFit® Plus, SmartReport® powered by QC Calc™, CAD interface, and FDA compliant SmartFeature®
Temperature	20° ± 1° C (Rated), 15° - 30° C (Safe Operating)
Power	100-240 VAC, 50/60 Hz, 1Ø, 700 W
Misc. Options	Motorized rotary indexer, footswitch, calibration grid
Sensor Options	TP20 touch probe, touch probe change rack, and QVI DRS™ laser
Measuring Accuracy	XY* E ₂ = (3.0 + 8L/1000) μ m (SprintMVP 400) E ₂ = (3.5 + 8L/1000) μ m (SprintMVP 600) Z** E ₁ = (4.0 + 8L/1000) μ m (All Models)



600 Model Shown



* Where L = Length in mm, with evenly distributed 10 kg load in the standard measuring plane. Depending on load distribution, accuracy at maximum rated load may be less than standard accuracy. XY axis artifact: 25 intersection grid reticle in the standard measuring plane. The standard measuring plane is defined as a plane that is 25 mm above the worktable.

**Z axis artifact: QVI step gage or master gage blocks.