

NEW Motorized Extended Guide Goniometer

ASG-40A

Stage size □40mm

RoHS

CE

Application Systems

Machine Vision

Manual Positions

Motion Control Products

Optical & Mirror Holder

FA Parts

Measurement & Control

FA Electrical Parts

Tool & Measure

Cleanroom & AntiStatic

Index

Piezo Stage

Precision Linear MS

High Speed MS

Motorized Goniometer

Motorized Rotation

Multiaxis Motorized

Industrial Robot

Controller & Driver & Cable

Custom-Built MS

High precision motorized goniometers with integrated bearing ways for superior stiffness, accuracy and durability. Their smooth movement is ideal for frequent angle adjustment.

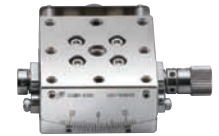


- Cost-effective motorized stages achieved by integrated structure in which guides are directly processed on the main body to reduce the number of parts and assembly time.
- Attachment pins (accessories) are ideal for positioning when assembling into $\alpha\beta$ axis or mounting on various instruments or devices.

Guide

- ▶ Contact our International Sales Division if you desire to assemble into an $\alpha\beta$ axis stage.
- ▶ Contact our International Sales Division if you desire a rotation center height not listed in the catalog.
- ▶ Manual type (ASG-40) is also available.

Reference G150



ASG-40

Specifications			NEW ASG-40A60	NEW ASG-40A75
Part Number			NEW ASG-40A60	NEW ASG-40A75
(Opposite model)			NEW ASG-40A60R	NEW ASG-40A75R
Mechanical Specifications	Travel [°]		±5	±4
	Table Size [mm]		40×40	40×40
	Travel Mechanism (reduction ratio)		Worm gear (1:332)	Worm gear (1:406)
	Positioning Slide		Extended Contact Ball Guide	Extended Contact Ball Guide
	Stage Material		SUS440C quench hardened	SUS440C quench hardened
	Finish		Electroless nickel	Electroless nickel
	Weight [kg]		0.4	0.4
Size Tolerance	Stage Height [mm]		15	15
	Rotation Center Height [mm]		60±0.1	75±0.1
	Rotation Center Deflection Accuracy [mm]		Within φ0.01	Within φ0.01
Accuracy Specifications	Resolution	(Full) [°/pulse]	about 0.00217	about 0.00177
		(Half) [°/pulse]	about 0.00108	about 0.00089
	MAX Speed [°/sec]		10	8.9
	Positional Repeatability [°]		±0.004	±0.004
	Load Capacity [N]		19.6 (2.0kgf)	19.6 (2.0kgf)
	Moment Stiffness [°/N·cm]		Roll 0.6, Yaw 0.6	Roll 0.6, Yaw 0.6
Lost Motion [°]		0.02	0.02	
Sensor	Sensor Part Number		Micro photo sensor: GP1S092HCPIF (Sharp Corporation); Limit sensor	
	Limit Sensor		Equipped (NORMAL CLOSE)	
	Origin Sensor		None	

Motor / Sensor Specifications		
Motor	Type	5-phase stepping motor 0.75A/phase (Oriental Motor Co., Ltd.)
	Motor Part Number	C9863-90215P (□28mm)
	Step Angle	0.72°
Sensor	Power Voltage	DC+5V - +24V
	Current Consumption	40mA or lower (20mA per sensor)
	Control Output	NPN open collector output 50mA
	Output Logic	When shaded: Output transistor OFF (no conduction)

Compatible Driver / Controller		
Control System	Compatible Driver	SD-5M, SD-5MA, SD-55M, SD-55MA, SD-514MSC, SD-5151, SD-525M
	Compatible Controller	ASC-PS, ASC-01, ASC-102, ASC-02, ASC-702, ASCG-101, ASC-302GS, ASC-304GS, ESC-M/ESC-S

