

NEW Motorized Extended Guide Goniometer

ASG-60A

Stage size □60mm



Application Systems

Machine Vision

Manual Positions

Motion Control Products

Optical & Mirror Holder

FA Parts

Measurement & Control

FA Electrical Parts

Tool & Measure

Cleanroom & AntiStatic

Index

Piezo Stage

Precision Linear MS

High Speed MS

Motorized Goniometer

Motorized Rotation

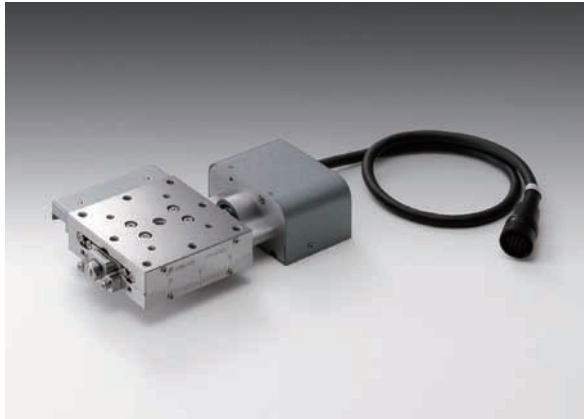
Multiaxis Motorized

Industrial Robot

Controller & Driver & Cable

Custom-Built MS

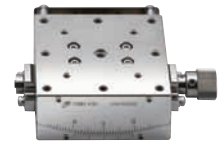
High precision motorized goniometers with integrated bearing ways for superior stiffness, accuracy and durability.
Their smooth movement is ideal for frequent angle adjustment.



- Cost-effective motorized stages achieved by integrated structure in which guides are directly processed on the main body to reduce the number of parts and assembly time.
- Attachment pins (accessories) are ideal for positioning when assembling into $\alpha\beta$ axis or mounting on various instruments or devices.

Guide

- ▶ Contact our International Sales Division if you desire to assemble into an $\alpha\beta$ axis stage.
- ▶ Manual type (ASG-60) is also available.
Reference G152



ASG-60

Specifications

Part Number		NEW ASG-60A60	NEW ASG-60A85	NEW ASG-60A105
(Opposite model)		NEW ASG-60A60R	NEW ASG-60A85R	NEW ASG-60A105R
Mechanical Specifications	Travel [°]	±14	±9	±7
	Table Size [mm]	60×60	60×60	60×60
	Travel Mechanism (reduction ratio)	Worm gear (1:246)	Worm gear (1:314)	Worm gear (1:380)
	Positioning Slide	Extended Contact Ball Guide	Extended Contact Ball Guide	Extended Contact Ball Guide
	Stage Material	SUS440C quench hardened	SUS440C quench hardened	SUS440C quench hardened
	Finish	Electroless nickel	Electroless nickel	Electroless nickel
	Weight [kg]	0.85	0.75	0.75
Size Tolerance	Stage Height [mm]	25	20	20
	Rotation Center Height [mm]	60±0.1	85±0.1	105±0.1
	Rotation Center Deflection Accuracy [mm]	Within φ0.01	Within φ0.01	Within φ0.01
	Resolution			
Accuracy Specifications	(Full) [°/pulse]	about 0.00293	about 0.00229	about 0.00198
	(Half) [°/pulse]	about 0.00146	about 0.00115	about 0.00095
	MAX Speed [°/sec]	10	8	6.6
	Positional Repeatability [°]	±0.004	±0.004	±0.004
	Load Capacity [N]	29.4 (3.0kgf)	29.4 (3.0kgf)	29.4 (3.0kgf)
	Moment Stiffness [°/N·cm]	Roll 0.3, Yaw 0.3	Roll 0.3, Yaw 0.3	Roll 0.3, Yaw 0.3
	Lost Motion [°]	0.02	0.02	0.02
Sensor	Sensor Part Number	Micro photo sensor: GP1S097HCZ0F (Sharp Corporation): Limit sensor, origin sensor		
	Limit Sensor	Equipped (NORMAL CLOSE)	Equipped (NORMAL CLOSE)	Equipped (NORMAL CLOSE)
	Origin Sensor	Equipped (NORMAL OPEN)	Equipped (NORMAL OPEN)	Equipped (NORMAL OPEN)

Motor / Sensor Specifications

Motor	Type	5-phase stepping motor 0.75A/phase (Oriental Motor Co., Ltd.)
	Motor Part Number	C9863-90215P (□28mm)
	Step Angle	0.72°
Sensor	Power Voltage	DC+5V - +24V
	Current Consumption	60mA or lower (20mA per sensor)
	Control Output	NPN open collector output 50mA
	Output Logic	When shaded: Output transistor OFF (no conduction): Limit sensor When shaded: Output transistor OFF (conduction): Origin sensor

Compatible Driver / Controller

Control System	Compatible Driver	SD-5M, SD-5MA, SD-55M, SD-55MA, SD-514MSC, SD-5151, SD-525M
	Compatible Controller	ASC-PS, ASC-01, ASC-102, ASC-702, ASCG-101, ASC-302GS, ASC-304GS, ESC-M/ESC-S

NEW Motorized Extended Guide Goniometer

ASG-60A

Stage size □60mm

RoHS

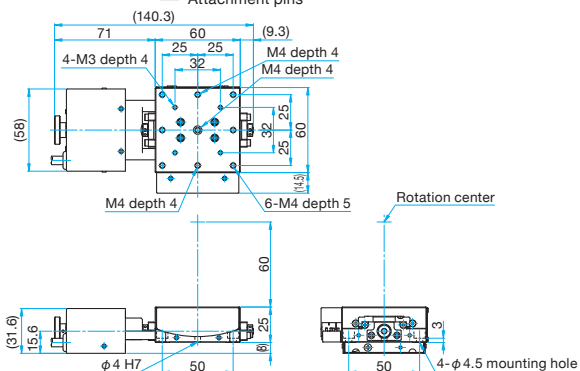
CE



Outline Drawing

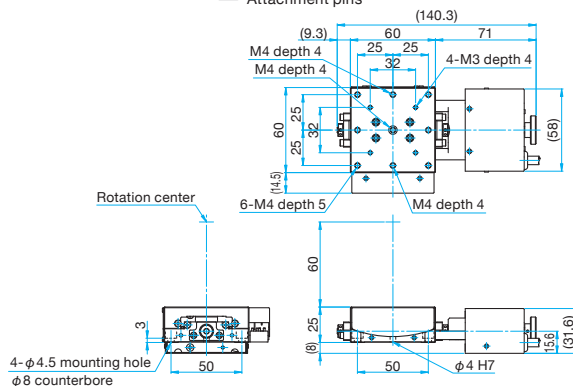
ASG-60A60

Hexagonal socket head cap screw M4x8...4 screws
Attachment pins



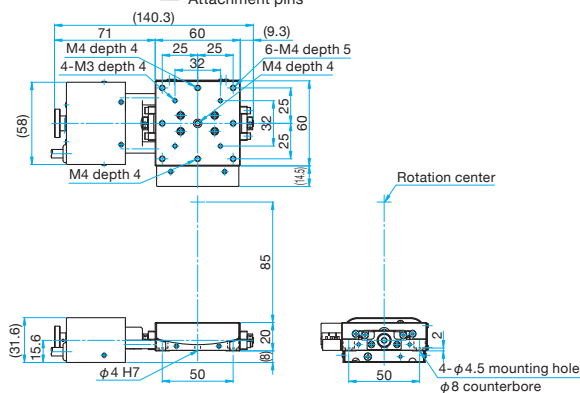
ASG-60A60R

Hexagonal socket head cap screw M4x8...4 screws
Attachment pins



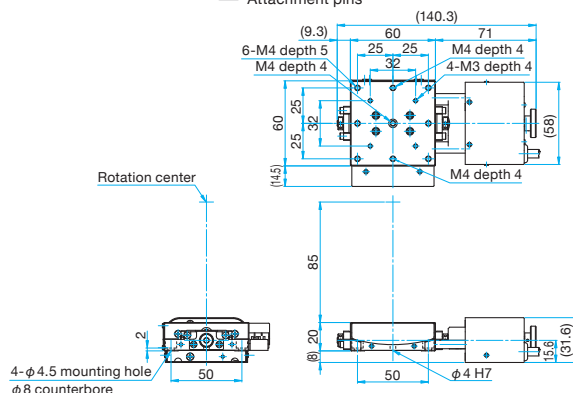
ASG-60A85

Hexagonal socket head cap screw M4x8...4 screws
Attachment pins



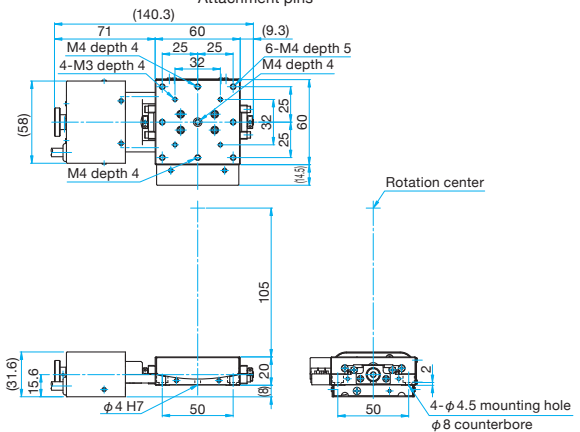
ASG-60A85R

Hexagonal socket head cap screw M4x8...4 screws
Attachment pins



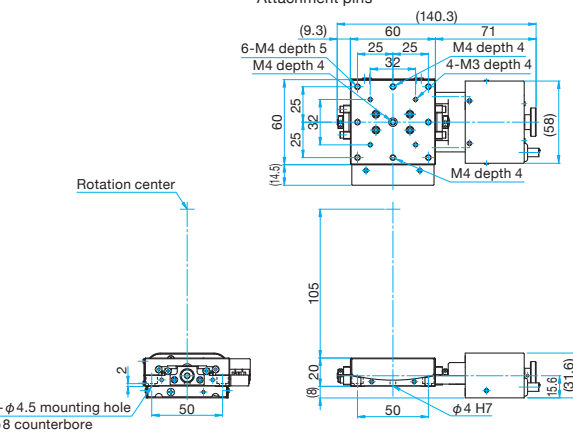
ASG-60A105

Hexagonal socket head cap screw M4x8...4 screws
Attachment pins

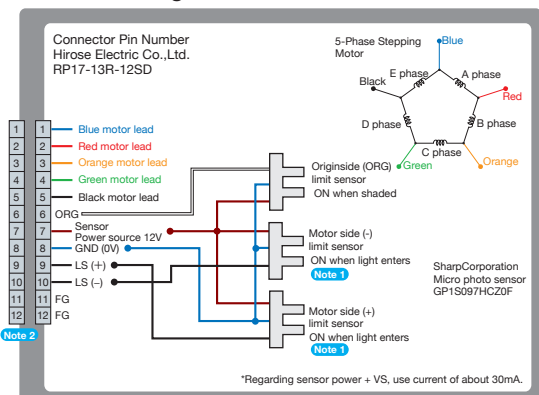


ASG-60A105R

Hexagonal socket head cap screw M4x8...4 screws
Attachment pins

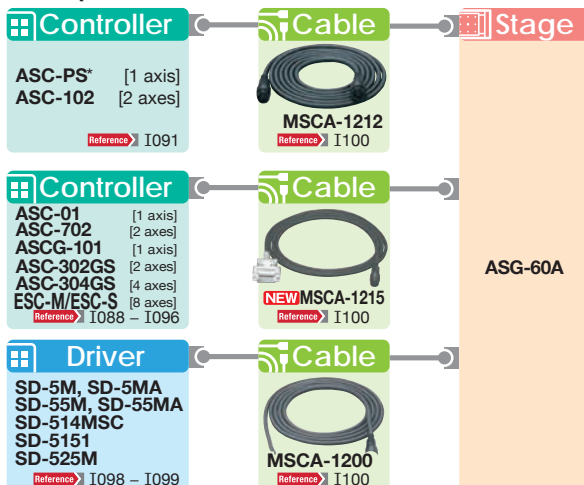


Connection Diagram



Note 1 The motor side limit sensor is the + direction limit sensor. Motorized stages are not fitted with proximity origin sensors.
Note 2 Compatible cable connector: Hirose Electric Co., Ltd. RP17-13PA-12PC/RP17-PC-122

Compatible Controllers / Drivers and Cables



* PASC-PS will be discontinued in September 2012, and will be replaced by ASC-01.

Application Systems

Machine Vision

Manual Positions

Motion Control Products

Optical & Mirror Holder

F A Parts

Measurement & Control

FA Electrical Parts

Tool & Measure

Cleanroom & AntiStatic

Index

Piezo Stage

Precision Linear MS

High Speed MS

Motorized Goniometer

Motorized Rotation

Multiaxis Motorized

Industrial Robot

Controller & Driver & Cable

Custom-Built MS