

**SFS Controllers | FPSC**

**Controllers with built-in piezo drivers for single axis / 3 axis.**



**FPSC-01**



**FPSC-503**

- These controllers are fitted with digital sensor input for each axis, enabling closed loop control by correcting hysteresis curve unique to piezo.
- Being connected to a PC via RS232C, GP-IB, or USB interface, the FINE-503(CL) allows control of a fine stage by simple commands sent from a PC.
- In addition to PC control via RS232C or USB interface, the FPSC-01 enables high-speed control synchronized with analog signal input.

Part Name	Part Number
1 axis SFS Controller with Analog Input Function	<b>NEW</b> FPSC-01
3 axis SFS Controller	FPSC-503
Control Pad	SJ-200A
FINE Cable	FPS-CA-3
DS Cable	FPSB-CA-3
BNC-BNC Cable	BNC-2-3.0

**Primary Functions**

Part Number	FINE-01y	FINE-503(CL)
Controller Function	<input type="radio"/>	<input type="radio"/>
Number of Control Axes	1	3
Stored Program Control	<input type="radio"/>	<input type="radio"/>
Feedback Control	Digital sensor	

**General Specifications**

Power Voltage	AC100V ±10% 50/60Hz
Power Consumption	50VA
Operating Temperature	10 – 30°C
Storage Temperature	-20 – 60°C
Ambient Humidity	20 – 80%RH
External Dimensions (WxHxDmm)	225x118x250/270x118x297
Weight (kg)	3.5    5.3

**Interface**

GP-IB	—	<input type="radio"/>
RS232C	<input type="radio"/>	
USB	<input type="radio"/>	
Analog input	<input type="radio"/>	—

**Optional**

CJ-200A	<input type="radio"/>
SKBNC-BNC-3.0	<input type="radio"/> —

**Performance Specifications**

Coordinate Indication Range	±999,999nm
Max. Travel to Set	±999,999nm

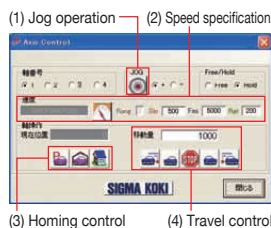
**Control Command**

Machine Origin Return	<input type="radio"/>
Theoretical Origin Setting	<input type="radio"/>
Relative Position Drive	<input type="radio"/>
Absolute Position Drive	<input type="radio"/>
Jog Operation	<input type="radio"/>
Position Appointment	—
Circular Interpolation Control	—
Linear Interpolation Control	—
Drive	<input type="radio"/>
Deceleration Stop	—
Emergency Stop	—
Speed Setting	<input type="radio"/>
Motor Free/Hold	—
Port Input	—
Port Output	—

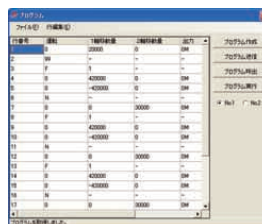
**SFS Software**

**Free Software | SGCommander (for RS232C) Windows® Version**

Free software is available to operate your controller easily from a PC. Each axis of a connected motorized stage can be moved using buttons on the screen. The software can be downloaded from our website.



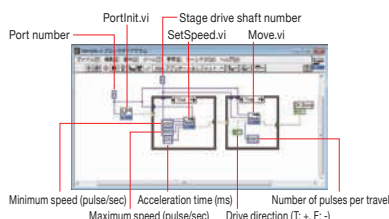
Simple operations are possible such as travel by specifying an axis, homing or jog operation.



Controllers such as SHOT-30\*/702 and FINE-\*\*, which have a built-in program function, allow editing of programs from a PC. Since data can be downloaded/uploaded from/to Excel sheets, it is easy to edit programs. In addition, upload of memory switch or download mode is available.

**Free Application LabVIEW (for v.5.1/v.6i/v.7.1/v.8.6/v.2010) RS232C/GP-IB**

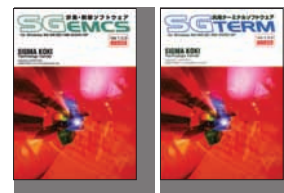
LabVIEW application is available for LabVIEW users.



**Other: 30 Day Trial Version (SGEMCSE/SGTERME) Trial Version**

SGEMCSE.....SGEMCSE is software for collecting data or measuring using automatic positioning equipment, measuring instrument or controller, and is offered 30 days for free.

SGTERME.....It allows command input using Excel for easy program making. SGTERME is ideal software to link with various devices, and is offered 30 days for free.



**Other: VB and VB.NET Users**

As ActiveX for programming, SGACTIONE/SGPATXE/SGSFSXE (7,800 JP Yen each) are available for VB. In addition, SGNETXE (12,500 JP Yen) is available for NET. Contact our International Sales Division for more information.

**Note on USB Driver Installation**

[WEB Reference](#) Home > Support > Software Information > USB Driver

**Sigma Koki Software: SGEMCSE / SGTERME / ActiveX**  
 USB connection is available for USB compatible controllers, but USB driver needs to be installed separately. Download the driver from the above webpage, and operate according to the instruction manual.

Application Systems

Machine Vision

Manual Positions

Motion Control Products

Optical & Mirror Holder

F A Parts

Measurement & Control

FA Electrical Parts

Tool & Measure

Cleanroom & AntiStatic

Index

Piezo Stage

Precision Linear MS

High Speed MS

Motorized Goniometer

Motorized Rotation

Multiaxis Motorized

Industrial Robot

Controller & Driver & Cable

Custom-Built MS