

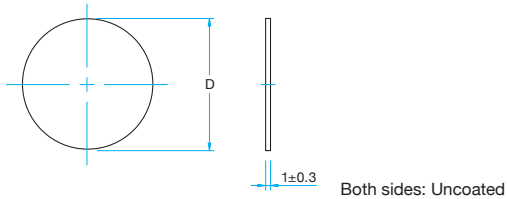
**Protective Windows / Protective Window Holders
 Focusing Lens Holders**

PW / PWH **RoHS**
FMLH

PW / PWH

- Protective windows can be attached to the focusing lens to prevent shatter from laser fabrication. The protective window comes in 3 different sizes. Protective Window Holders (PWH)
 - Visible Spectrum Achromats
 - YAG Laser Focusing Lenses
 - Focusing Lenses for Fiber Laser
 - Excimer Laser Focusing Lenses (some models)

Protective Windows (Package of ten pieces)

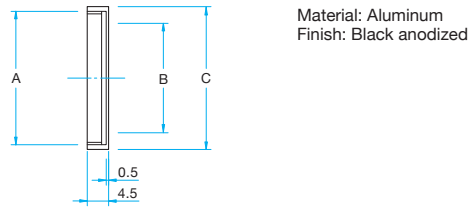


Part Number	D [mm]	Protective window retainer
PW-21	φ21	PGH-24
PW-27	φ27	PGH-30
PW-33	φ33	PGH-36

Guide & Attention

- ▶ Since protective windows are uncoated and due to surface reflections, the transmittance will be limited to 90%.
- ▶ Anti-reflection coating for specific wavelength is available.
- ▶ Replace protective window if it is polluted or poor transmittance performance.

Protective Window Holders (Retainer only)



Part Number	A [mm]	B [mm]	C [mm]	Protective window diameter [mm]
PWH-24	M22 P=0.75	φ18	φ24	φ21
PWH-30	M28 P=0.75	φ23	φ30	φ27
PWH-36	M34 P=0.75	φ29	φ36	φ33

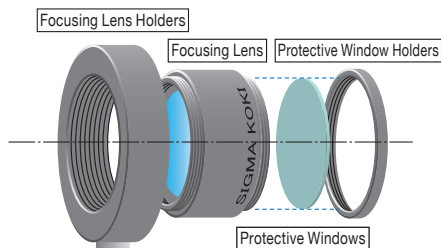
FMLH

Please select a fixed lens holder and a protective window that matches the profile of the focusing lens. (use the matrix table on the right)

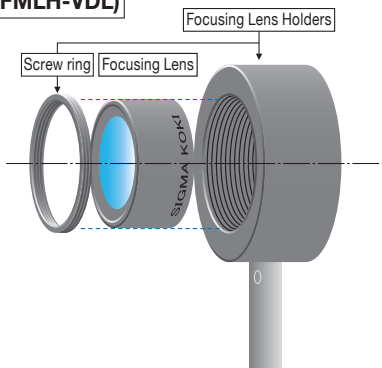
- There are two types of fixed holder for the focusing lens. **Reference** D032

- Thread Mount Type (FMLH-M)
 - Visible Spectrum Achromats
 - YAG Laser Focusing Lenses
 - Focusing Lenses for Fiber Laser (M34 or smaller)
 - Excimer Laser Focusing Lenses (some models)
- Lens Tube Type (FMLH-VDL)
 - Ultraviolet Achromats

Thread Mount Type (FMLH-M)



Lens Tube Type (FMLH-VDL)



List of adaptive lens holder and protective window

Part Number	Protective window	Protective window retainer	Compatible Optic Mounts			
Visible Spectrum Achromats						
VSA-30-40PY2	PW-33	PWH-36	FMLH-M34-30			
VSA-30-50PY2						
VSA-30-60PY2						
VSAD-30-80PY2						
VSAD-30-100PY2						
VSAD-30-150PY2						
VSAD-30-200PY2	YAG Laser Focusing Lenses					
YLFL-25-20PY1	PW-21	PWH-24	FMLH-M29-25			
YLFL-30-30PY1	PW-27	PWH-30	FMLH-M34-30			
YLFL-30-40PY1						
YLFL-30-50PY1						
YLFDL-30-60PY1	PW-33	PWH-36	FMLH-M34-30			
YLFDL-30-80PY1						
YLFDL-30-100PY1						
YLFDL-30-150PY1						
Focusing Lenses for Fiber Laser						
FLFL-15-20PF1	PW-21	PWH-24	exclusive adapter + FMLH-M29-25			
FLFL-20-30PF1	PW-27	PWH-30	exclusive adapter + FMLH-M34-30			
FLFL-30-40PF1						
FLFL-30-50PF1	PW-33	PWH-36	FMLH-M34-30			
FLFL-30-60PF1						
FLFL-30-80PF1						
FLFL-30-100PF1						
FLFDL-30-150PF1						
FLFDL-50-100PF1						
FLFDL-50-200PF1						
FLFDL-50-300PF1						
Excimer Laser Focusing Lenses						
ELFL-30-40P	PW-33	PWH-36	FMLH-M34-30			
ELFL-30-50P						
ELFL-30-60P						
ELFL-30-80P						
NELFL-30-100P						
NELFL-30-150P						
NELFL-30-200P	X	X	FMLH-M50.9-50			
DELFL-50-100P						
DELFL-50-150P						
DELFL-50-200P						
DELFL-50-250P						
DELFL-50-300P						
Ultraviolet Achromats						
UVA-30-50P				X	X	FMLH-VDL-30
UVA-30-80P						
UVA-30-100P						
NUVA-30-150P	FMLH-VDL-40					
NUVA-30-200P						
UVA-40-80P						
NUVA-40-100P	FMLH-VDL-50					
NUVA-40-150P						
NUVA-40-200P						
NUVA-40-250P						
UVA-50-100P						
NUVA-50-150P						
NUVA-50-200P						
NUVA-50-250P						
NUVA-50-300P						

Application Systems

Machine Vision

Manual Positions

Motion Control Products

Optical & Mirror Holder

F A Parts

Measurement & Control

FA Electrical Parts

Tool & Measure

Cleanroom & AntiStatic

Index

Mirrors

Beamsplitters

Filters

Polarizers

Lenses

Multi-Element Optics

Prisms

Substrates & Windows

Holder & Vibration isolator