

# CHGM-40M/C

0.4 MP 1/2.9" CMOS GigE Area Scan Camera



GEN*i*CAM

GIG*E*  
VISION

## Introduction

CHGM-40M/C adopts Sony IMX 287 CMOS sensor and provides high quality image. The GigE interface provides high-speed real-time transmission of uncompressed data with the maximum frame rate reaching 312.9 fps at full resolution.

## Key Feature

- Adopts GigE interface and max. transmission distance of 100 meters without relay
- Supports auto and manual adjustment for gain, exposure control, white balance, LUT, Gamma correction, etc.
- Up to 128 MB local memory for burst transmission and retransmission
- Compatible with GigE Vision Protocol V2.0, GenCam standard and third-party software meeting with GigE Vision Protocol

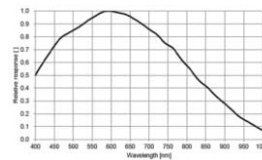
## Available Model

Mono camera: CHGM-40M  
Color camera: CHGM-40C

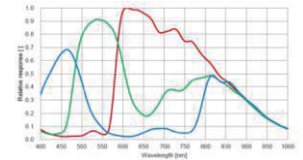
## Applicable Industry

Electronic semiconductor, factory automation, quality inspection, etc.

## Sensor Quantum Efficiency

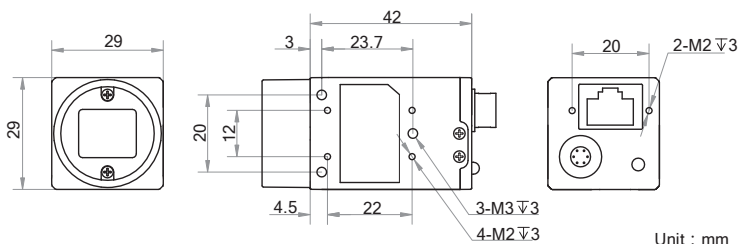


CHGM-40M



CHGM-40C

## Dimension



Unit : mm

**HOURS**  
www.hours-web.com

## Specification

Model	CHGM-40M	CHGM-40C
<b>Camera</b>		
Sensor type	CMOS, global shutter	
Sensor model	Sony IMX287	
Pixel size	6.9 $\mu\text{m}$ $\times$ 6.9 $\mu\text{m}$	
Sensor size	1/2.9"	
Resolution	720 $\times$ 540	
Max. frame rate	312.9 fps @720 $\times$ 540	
Dynamic range	74 dB	
SNR	41 dB	
Gain	0 dB to 20 dB	
Exposure time	1 $\mu\text{s}$ to 10 s	
Shutter mode	Off/ Once/ Continuous exposure mode	
Mono/color	Mono	Color
Pixel format	Mono 8/10/10p/12/12p	Mono 8/10/12, Bayer GR 8/10/10p/12/12p YUV 422 Packed, YUV422_YUYV_Packed, RGB8
Binning	Not supported	
Decimation	Not supported	
Reverse image	Supports horizontal and vertical reverse image	
Image buffer	128 MB	
<b>Electrical features</b>		
Data interface	Gigabit Ethernet	
Digital I/O	6-pin Hirose connector provides power supply and I/O, including opto-isolated Input x 1 (Line 0), opto-isolated Output x 1 (Line 1), bi-directional non-isolated I/O x 1 (Line 2)	
Power	3.1 W@12 VDC, voltage range 9 VDC to 26 VDC; supports PoE power supply	
<b>Structure</b>		
Lens mount	C-Mount	
Dimension	29 mm $\times$ 29 mm $\times$ 42 mm (1.1" $\times$ 1.1" $\times$ 1.7")	
Weight	Approx. 68 g (0.15 lb.)	
Ingress Protection	IP 30 ( only when lens is correctly mounted and cables are correctly connected)	
Temperature	Working temperature: 0 $^{\circ}\text{C}$ to 50 $^{\circ}\text{C}$ (32 $^{\circ}\text{F}$ to 122 $^{\circ}\text{F}$ ) Storage temperature: -30 $^{\circ}\text{C}$ to 70 $^{\circ}\text{C}$ (-22 $^{\circ}\text{F}$ to 158 $^{\circ}\text{F}$ )	
Humidity	20% to 80% without condensation	
<b>General</b>		
Client software	MVS or third-party software meeting with GigE Vision Protocol	
Operation system	32/64-bit Windows XP/7/10, 32/64-bit Linux or 64-bit MacOS	
Compatibility	GigE Vision V2.0, GenICam	
Certifications	CE, FCC, RoHS	