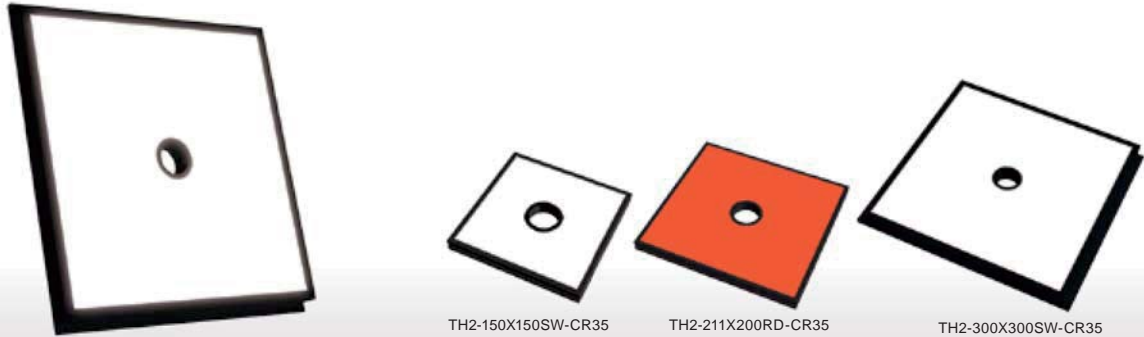


Provide a light from the same axis as the camera

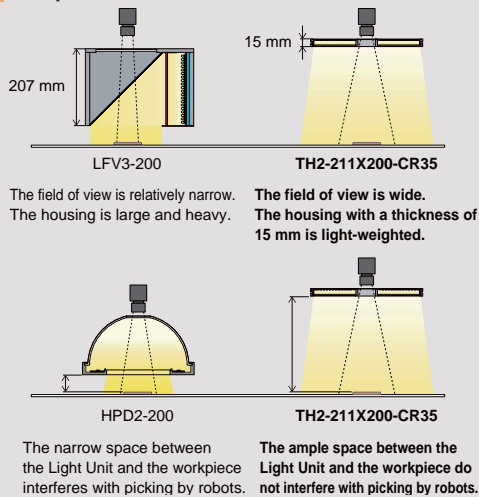


**Applications** Inspection of FIPG sealing material on metal components, inspection for stains and foreign materials in disposable diapers, reading engraved text on piston ring, robot picking, etc.

➤ **Illumination from the Same Axis as the Camera**

Flat Lights with a camera window at the center of the emitting surface. They do not serve as a back light but provide a light from the same axis as the camera in the way the Dome Lights and Coaxial Lights do.

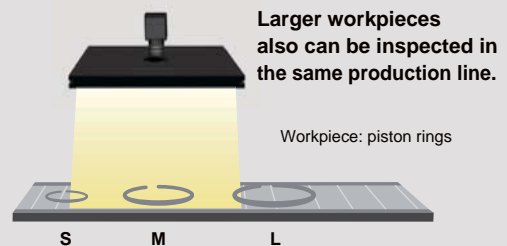
■ **Comparison of structures**



➤ **Uniform Illumination of a Wide Range**

These Light Units have a wider emitting surface compared to that of the Coaxial Lights and Dome Lights. This enables uniform illumination of a wide range.

■ **Applicable to a wide range of workpiece sizes**



■ **Product lineup**

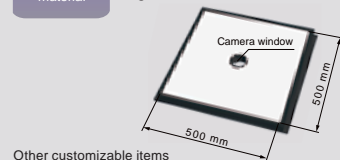
The available LED color is white or red.  
Three sizes of emitting surface: 150 x 150 mm, 211 x 200 mm, and 300 x 300 mm.  
These Light Units can deal with a wide variety of inspection contents.

➤ **Custom Orders**

Please contact your sales representative.

E.g.: Large size of 500 x 500 mm

Creating a large size Light Unit



- Other customizable items
- Changes in the shape of the camera window
  - Changes in the LED color (blue, infrared, or other color)

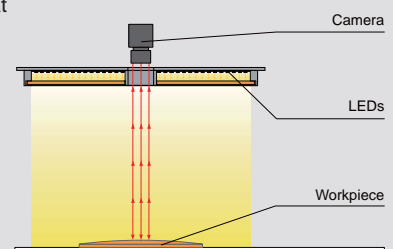
**Customizable items**

- External/internal diameter
  - Wavelength/Color
  - Increase output
  - Cable length
  - Illuminating angle
  - Format/material
  - Connector format
  - Installation/mounting
- Etc.

➤ **Example Configuration**

Flat Lights with a camera window at the center of the emitting surface. They provide a light from the same axis as the camera.

■ **TH2-300X300-CR35**



### Imaging Example: Imaging FIPG Sealing Material on Metal Components

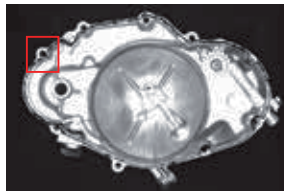


Workpiece image



FIPG sealing material on metal components

TH2-300X300SW-CR35



The state of FIPG sealing material can be imaged.

The above sample workpiece has been made specifically for sample imaging and is not the one for actual inspection.

### Imaging Example: Imaging Stains and Foreign Materials in Disposable Diapers

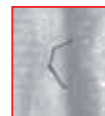
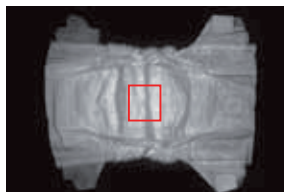


Workpiece image



Disposable diapers

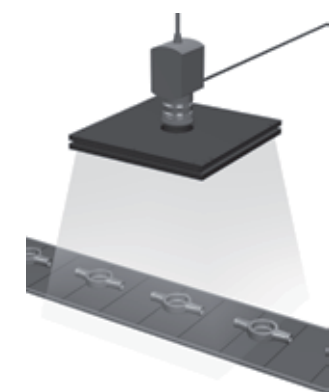
TH2-300X300SW-CR35



The foreign material on the surface is imaged.

The above sample workpiece has been made specifically for sample imaging.

### Imaging Example: Imaging Engraved Text on Textured Metal Surfaces



Workpiece image



Textured metal

TH2-150X150SW-CR35

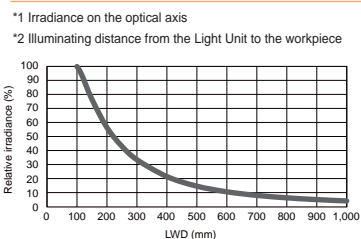


The engraved text is clearly imaged.

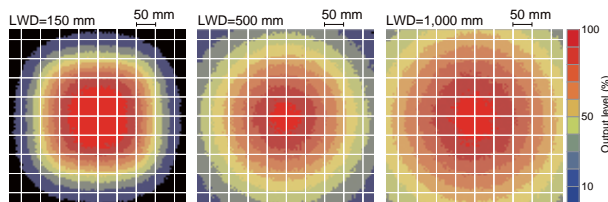
### Data: Relative Irradiance Graph and Uniformity (Representative Example)

TH2-300X300SW-CR35

Relative irradiance graph (LWD characteristics)<sup>\*1</sup>



Uniformity (Relative irradiance)



Direct Lighting	LDR2 LDR2-LA LDR-LA1 SQR SQR-TP
Diffused Lighting	HPR2 LFR LKR FPR FPQ2
Direct Lighting	LDL2 LDLB HLDL2 HL
Diffused Lighting	TH2 (5 types) TH LFL HPD2 LDM2 LAV PDM LFX3 LFX3-PT LFX3
Coaxial Lighting	MSU MFU
Strobe Lighting	PF
Water-proof	HADR-IP/ HSL-PCL
Ultraviolet Lighting	UV2 UV LNSP-UV-FN
Infrared Control Lighting	IR2
Spot Lighting, Etc.	IU HLV3 HLV2 LV LSP HFS/HFR HLV3-NR HLV3-3M-RGB-4 HLV2-NR HLV2-3M-RGB-3W PFB3 PFB2
Convergent Lighting	LNLP LNSP2 LNSP Coaxial Units LNSP-FN LN/LN-HK
Diffused Lighting	LNSD LND2 HLND LT LNV
Oblique-Angled Lighting	LNDG LNIS2 LNIS LNIS-FN
Lenses	Telecentric Lens Macro Lens

# TH2-CR Series

Camera-Window Type



## Lineup

Model name	LED color	Power consumption	Peak wavelength / correlated color temperature	Options	Extension cables	Recommended Control Units	Weight
TH2-150X150RD-CR35	Red	24 V / 30 W	635 nm	Bracket	FCB <sup>2</sup> Straight Cable	PD3    POD <sup>1</sup>	350 g
TH2-150X150SW-CR35	White	24 V / 30 W	5,800 K		FCB-W <sup>3</sup> 2-branch Cable		
TH2-211X200RD-CR35	Red	24 V / 63 W	635 nm	-	FCB-F 4-branch Cable	PD3-10024-8 POD-22024-4-PEI <sup>1</sup> PSB4-30024-PEI	550 g
TH2-211X200SW-CR35	White	24 V / 62 W	5,800 K		FRCB Robot Cable		
TH2-300X300RD-CR35	Red	24 V / 83 W	635 nm		FCB-EL2 Straight Cable		
TH2-300X300SW-CR35	White	24 V / 84 W	5,800 K		FCB-W-EL2 2-branch Cable		

Extension Cables ▶ P.308

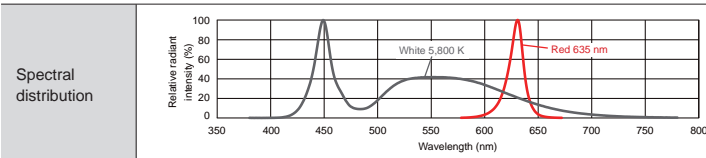
Control Unit Selection Guide ▶ P.251

List of Control Unit Specifications ▶ P.253

<sup>1</sup> The cables with a model name that ends with "-ME7", "-EL2", "-PF", or "-PF-EL9" are not included.  
<sup>2</sup> The cables with a model name that ends with "-EL2" are not included.

Light Units with a 500 x 500 mm emitting surface are available for custom orders.  
 We also accept custom orders for the size of the camera window, LED color (blue, infrared, or other color), etc.  
 Please feel free to contact your sales representative for details.

## LED Properties



Offers you the most suitable lens filter for each wavelength.  
 For details about the lens filter, refer to P.299.

Be sure to read the "Instruction Guide" included with the product before use and follow the safety precautions upon use.  
 The data included is for reference only. Actual values may vary.

## Options



This is a dedicated bracket for affixing the TH2 series Light Units. The TH2 series can be affixed in four points.

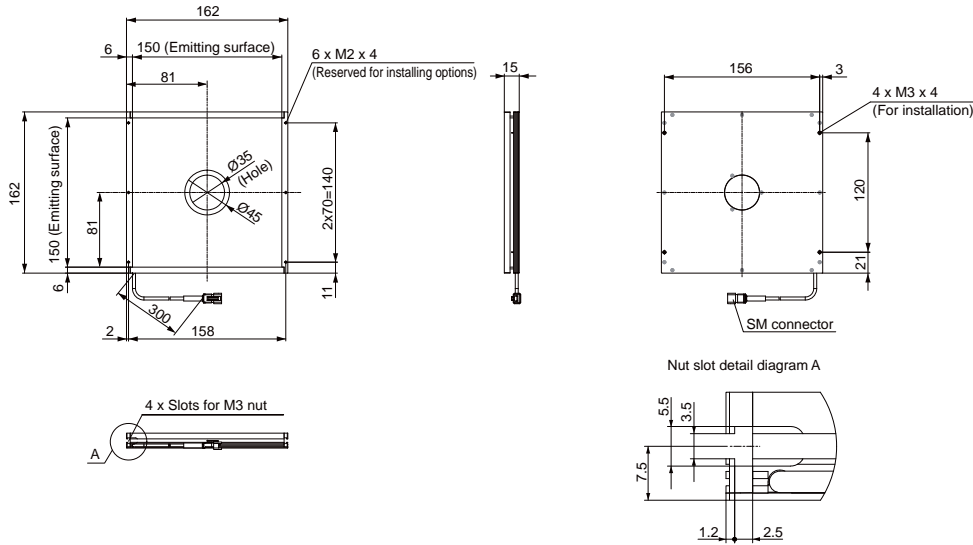
### Bracket

Model name	Applicable Light Unit (Common for all colors)
BK-TH-LE12	Installation bracket common to all TH2 models (includes 4)

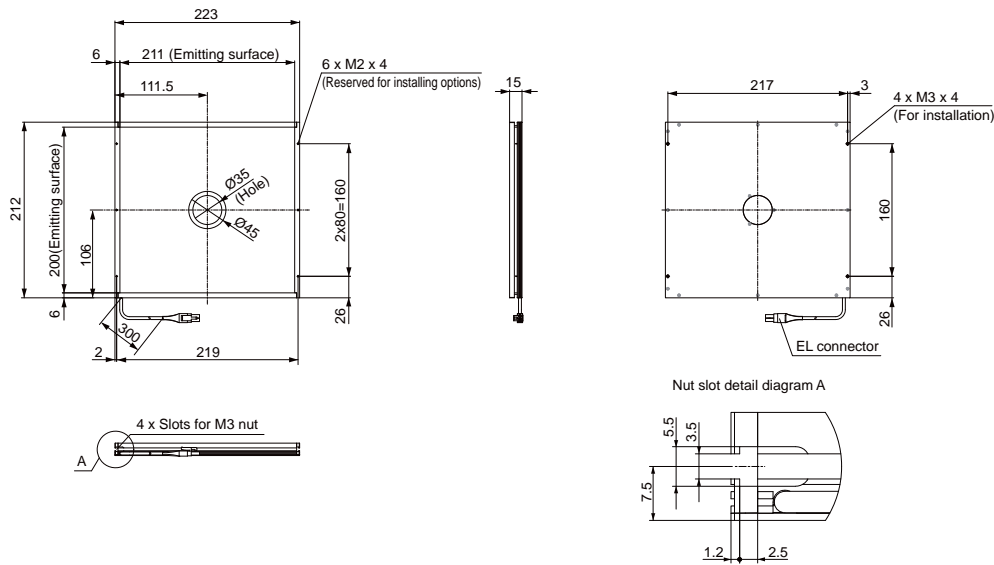
▶ P.305

## Dimensions (mm)

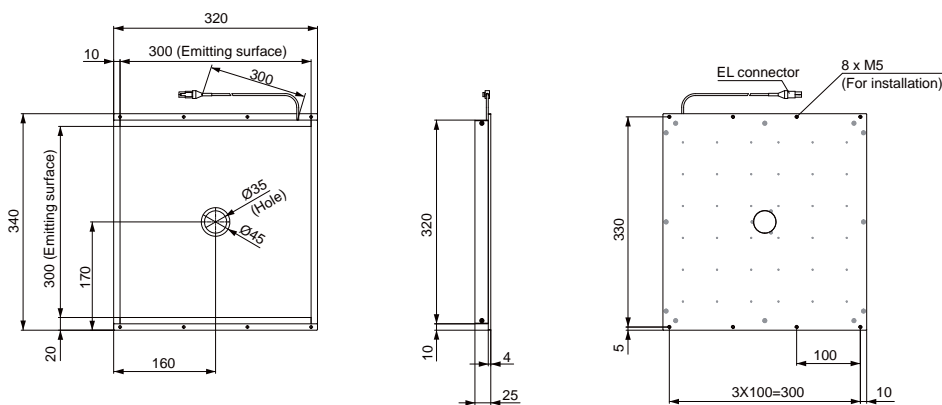
TH2-150X150RD-CR35/SW-CR35



TH2-211X200RD-CR35/SW-CR35



TH2-300X300RD-CR35/SW-CR35



You can change the connectors of the Light Unit cable. Choose between M12 connectors and flying leads. Refer to P.5 for details.

You can inquire using our website.

Sample Testing	Light Unit Selection	Free Product Trial	Custom Orders	Product Details	Pricing/Quotation	Discontinued Products
----------------	----------------------	--------------------	---------------	-----------------	-------------------	-----------------------

Direct Lighting	LDR2
	LDR2-LA
	LDR-LA1
	SQR
Diffused Lighting	SQR-TP
	HPR2
	LFR
	LKR
Direct Lighting	FPR
	FPQ2
	LDL2
	LDLB
Direct Lighting	HLDL2
	HL
	TH2 (5 types)
	TH
Diffused Lighting	LFL
	HPD2
	LDM2
	LAV
	PDM
	LFX3
	LFX3-PT
LFX3	
Coaxial Lighting	MSU
	MFU
Strobe Lighting	PF
	HLDR-IP/HSL-PCL
Water-proof	UV2
	UV
Ultraviolet Lighting	LNSP-UV-FN
	IR2
Intensity/Infrared Control Lighting	IU
	HLV3
Spot Lighting, Etc.	HLV2
	LV
	LSP
	HFS/HFR
	HLV3-NR
	HLV3-3M-RGB-4
	HLV2-NR
	HLV2-3M-RGB-3W
	PFBR
	PFB3
PFB2	
Convergent Lighting	LNLP
	LNSP2
	LNSP
	Coaxial Units
Diffused Lighting	LNSP-FN
	LN/LN-HK
	LNSD
	LND2
Oblique/Angled Lighting	HLND
	LT
	LNV
	LNDG
Lenses	LNIS2
	LNIS
	LNIS-FN
	Telecentric Lens
	Macro Lens