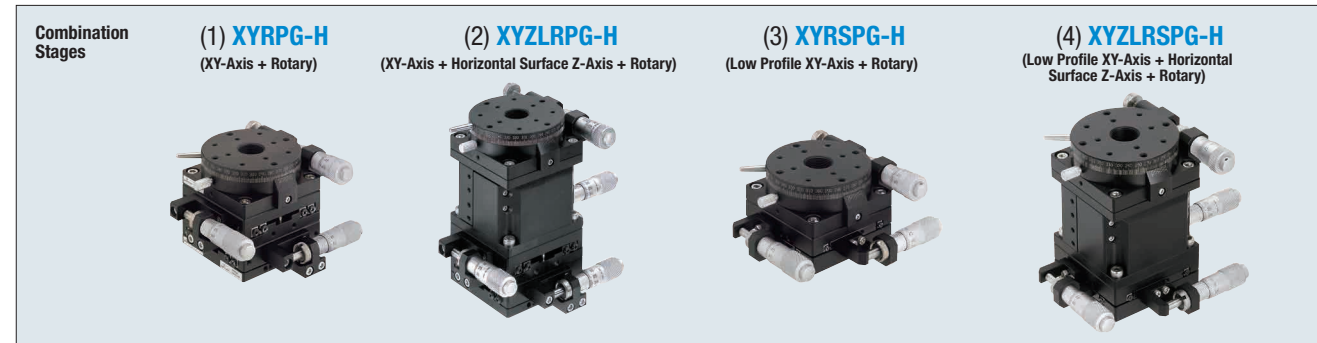


# [High Precision] Combined Stages



The shapes are different depending on the size. See details on CAD data.

Part Number	Stage Configuration			Stage Surface (mm)	External Dimensions (mm)			Travel Distance (mm)			Load Capacity (N)	Weight (kg)
	Type	No.	Bottom		Top	W	D	H	X	Y		
XYZPG(No.)-H	40	XYPG40 (P.2056)	ZPG40 (P.2068)	40 x 40	84.5	77.5	173.5	±6.5	±6.5	±6.5	9.8	0.48
	60	XYPG60 (P.2056)	ZPG60 (P.2068)	60 x 60	98.5	91.5	178.5	±6.5	±6.5	±6.5	19.6	0.95
	80	XYPG80 (P.2056)	ZPG80 (P.2068)	80 x 80	149.5	143.5	236	±12.5	±12.5	±12.5	49.0	1.80
XYZLPG(No.)-H	40	XYPG40 (P.2056)	ZLPG40 (P.2070)	40 x 40	96	77	80	±6.5	±6.5	±3.0	9.8	0.48
	60	XYPG60 (P.2056)	ZLPG60 (P.2070)	60 x 60	115	92	95	±6.5	±6.5	±3.0	39.2	1.12
	80	XYPG80 (P.2056)	ZLPG80 (P.2070)	80 x 80	150	135	95	±12.5	±12.5	±5.0	29.4	2.00
XYZLSPG(No.)-H	40	XSPG40 (P.2057)	ZLPG40 (P.2070)	40 x 40	100	81	62	±6.5	±6.5	±3.0	7.8	0.40
	60	XSPG60 (P.2057)	ZLPG60 (P.2070)	60 x 60	119	97	77	±6.5	±6.5	±3.0	23.5	1.00
	80	XSPG80 (P.2057)	ZLPG80 (P.2070)	80 x 80	151	102	77	±12.5	±12.5	±5.0	29.4	1.70

- For detailed dimensions, material and characteristics, see the catalog page for each stage.
- For included screw sizes, see the pages for the bottom stages.
- Knob Cover HDCVR13 (Sold Separately): increases diameter of Ø 13 mm knob. P.2035
- Extension Cover HDEXT13 (Sold Separately): extends Ø 13 mm head knobs. P.2035

## Combinations of Cross Roller stages listed in this catalog.

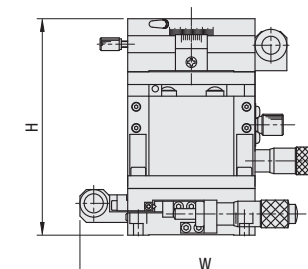
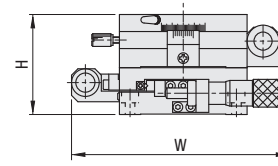
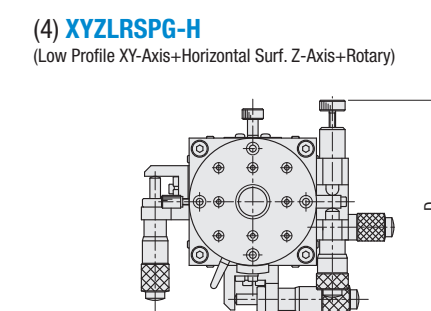
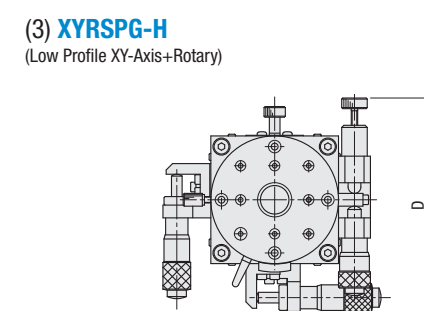
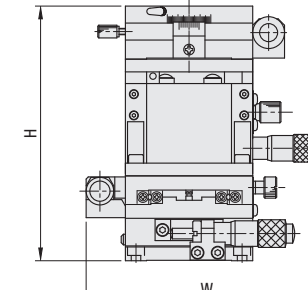
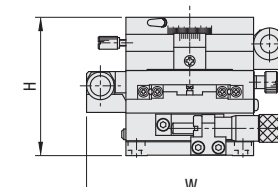
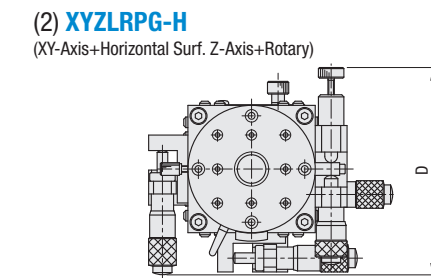
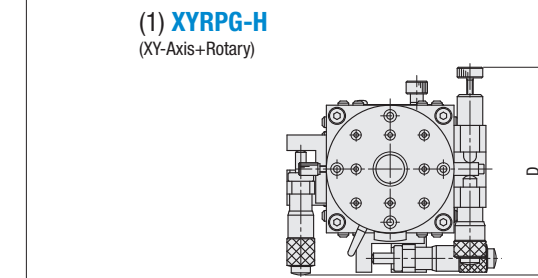
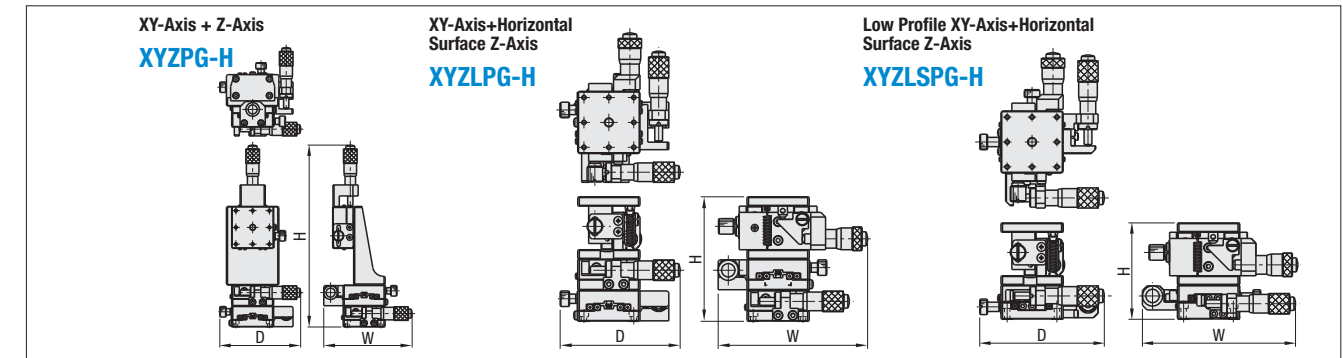
Part Number	Stage Configurations				Stage Surface (mm)	External Dimensions (mm)			Distance/Rotation (mm/deg)				Load Capacity (N)	Weight (kg)
	Type	No.	Bottom	Middle		Top	W	D	H	X	Y	Z		
(1) XYRPG(No.)-H (XY-Axis + Rotary)	38	XYPG40 (P.2056)	RPG38 (P.2097)	—	Φ38	85	84	60	±6.5	±6.5	—	Coarse 360°	9.8	0.37
	60	XYPG60 (P.2056)	RPG60 (P.2097)	—	Φ60	99	98	65	±6.5	±6.5	—	Fine Feed ±5°	29.4	0.78
	85	XYPG80 (P.2056)	RPG85 (P.2097)	—	Φ85	150	137	65	±12.5	±12.5	—	—	39.2	1.48
(2) XYZLRPG(No.)-H (XY-Axis + Horizontal Surf. Z-Axis + Rotary)	38	XYPG40 (P.2056)	ZLPG40 (P.2070)	RPG38 (P.2097)	Φ38	96	84	100	±6.5	±6.5	±3.0	Coarse 360°	8.9	0.57
	60	XYPG60 (P.2056)	ZLPG60 (P.2070)	RPG60 (P.2097)	Φ60	115	98	120	±6.5	±6.5	±3.0	Fine Feed ±5°	29.4	1.40
	85	XYPG80 (P.2056)	ZLPG80 (P.2070)	RPG85 (P.2097)	Φ85	150	137	120	±12.5	±12.5	±5.0	—	24.7	2.48
(3) XYRSPG(No.)-H (Low Profile XY-Axis + Rotary)	38	XSPG40 (P.2057)	RPG38 (P.2097)	—	Φ38	99	84	42	±6.5	±6.5	—	Coarse 360°	8.8	0.29
	60	XSPG60 (P.2057)	RPG60 (P.2097)	—	Φ60	103	101	47	±6.5	±6.5	—	Fine Feed ±5°	26.4	0.68
	85	XSPG80 (P.2057)	RPG85 (P.2097)	—	Φ85	151	132	47	±12.5	±12.5	—	—	34.3	1.18
(4) XYZLRSPG(No.)-H (Low Profile XY-Axis + Horizontal Surf. Z + Rotary)	38	XSPG40 (P.2057)	ZLPG40 (P.2070)	RPG38 (P.2097)	Φ38	100	84	82	±6.5	±6.5	±3.0	Coarse 360°	6.8	0.49
	60	XSPG60 (P.2057)	ZLPG60 (P.2070)	RPG60 (P.2097)	Φ60	119	101	102	±6.5	±6.5	±3.0	Fine Feed ±5°	20.6	1.28
	85	XSPG80 (P.2057)	ZLPG80 (P.2070)	RPG85 (P.2097)	Φ85	151	132	102	±12.5	±12.5	±5.0	—	22.5	2.18

- For detailed dimensions, material and characteristics, see the catalog page for each stage.
- For included screw sizes, see the pages for the bottom stages.
- Knob Cover HDCVR13 (Sold Separately): increases diameter of Ø 13 mm knob. P.2035
- Extension Cover HDEXT13 (Sold Separately): extends Ø 13 mm head knob. P.2035

Part Number Example: XYRPG38-H

# [High Precision] Combined Stages

continued



The shapes are different depending on the size. See details on CAD data.