

XYZ axis Preset Stages

MLT25

Stage size 15/25/40/60mm

RoHS

- Application Systems
- Machine Vision
- Manual Positions
- Motion Control Products
- Optical & Mirror Holder
- FA Parts
- Measurement & Control
- FA Electrical Parts
- Tool & Measure
- Cleanroom & AntiStatic
- Index
- X Axis
- XY Axis
- Z Axis
- XZ Axis
- XYZ Axis
- Rotation
- Goniometers /Tilt
- Multiaxis
- Linear Guide

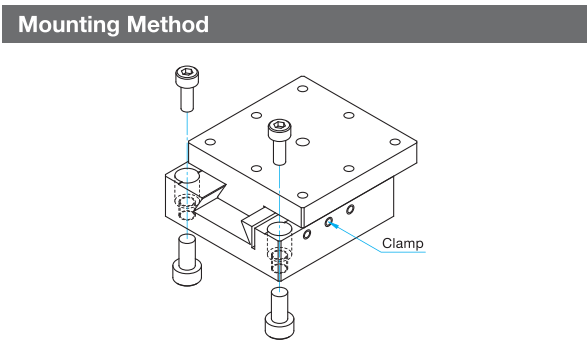
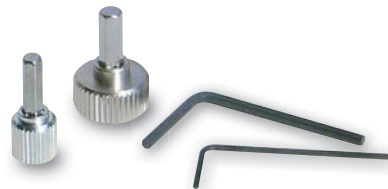
Space-saving, no compact XYZ axis stages with horizontal table top, suitable for less frequent operations that require fine adjustment.

- Ideal for less frequent operations and fine adjustment.
- Elimination of adjustment knobs can prevent errant operations, and elimination of protrusions makes these stages suitable for assembly in systems.

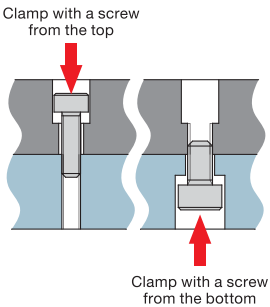


Guide

- A hex wrench with knob and clamping wrench are included.



Detailed Illustration



Top mounting

Tapped holes are used as counterbores because screws are smaller than tapped holes and will go in without any interference.

Bottom mounting

Clamp with screws that match the specification of tapped holes.

About Mounting Holes

The bottom mounting holes of preset stages are tapped holes. These stages allow mounting from the top or the bottom, convenient for securing on optical breadboards or other instruments as well as assembling in systems. Use the screws of [redacted] side the X axis to insert screws in mounting holes.

Part Number	Secure from the top	Secure from the bottom
MLT25-15	M2	M2.6
MLT25-25	M2	M3
MLT25-40	M3	M4
MLT25-60	M4	M5

* When mounting from the top surface, [redacted] side the X axis to insert screws in mounting holes.

Specifications					
Part Number		MLT25-15	MLT25-25	MLT25-40	MLT25-60
Table Size [mm]		15×15	25×25	40×40	60×60
Travel [mm]		XY axis ±2, Z axis +2/-0	XY axis ±3, Z axis +3/-0	XY axis ±7, Z axis +5/-0	XY axis ±10, Z axis +7/-0
Screw Pitch [mm]		0.4	0.5	0.5	0.5
Positioning Slide		Dovetail slide method	Dovetail slide method	Dovetail slide method	Dovetail slide method
Primary Material		Brass	Brass	Brass	Brass
Finish		Super black chrome	Super black chrome	Super black chrome	Super black chrome
Load Capacity [N]		4.9 (0.5kgf)	6.9 (0.7kgf)	29.4 (3.0kgf)	98.1 (10.0kgf)
Travel Accuracy	Straightness [μm]	30	30	30	30
	Pitch [N·m]	—	0.3	0.5	1.0
	Yaw [N·m]	—	0.3	0.5	1.0
Moment Stiffness	Pitch [°/N·cm]	—	9.7	5.8	1.5
	Roll [°/N·cm]	—	7.7	3.7	2.5
Parallelism [μm]		200	200	200	200
Weight [kg]		0.04	0.16	0.53	1.7

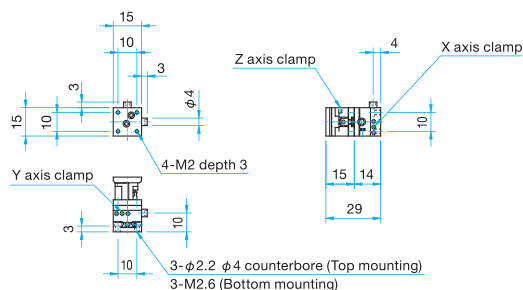
Configuration				
Part Number	MLT25-15	MLT25-25	MLT25-40	MLT25-60
Z axis	MLT23-15	MLT23-25	MLT23-40	MLT23-60
XY axis	MLT22-15	MLT22-25	MLT22-40	MLT22-60



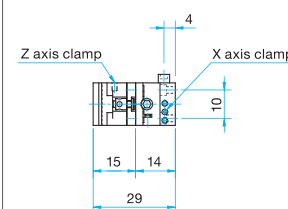
Outline Drawing

MLT25-15

- Pan head screw M2×5...3 screws, One 2.5mm hex wrench with knob, One 0.89mm hex wrench
 XY axes=Wrench size for adjustment 2.5mm, Z axis=Adjustment hole size ϕ 1.8mm
 Wrench size for clamp common to XYZ axes=0.89mm

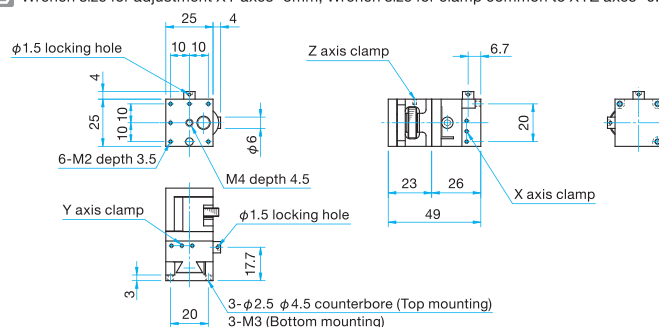


[Enlarged view of clamp position]



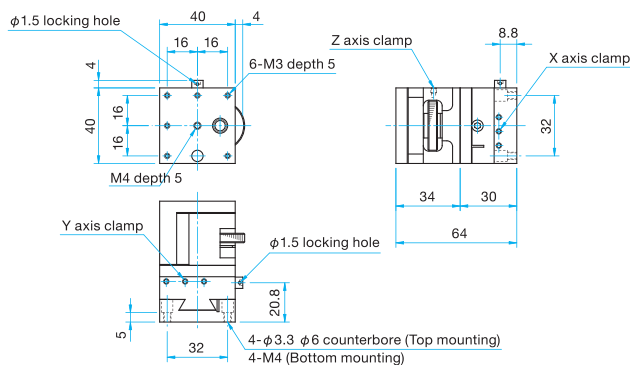
MLT25-25

- Pan head screw M2×6...3 screws, One 3mm hex wrench with knob, One 0.89mm hex wrench
 Wrench size for adjustment XY axes=3mm, Wrench size for clamp common to XYZ axes=0.89mm



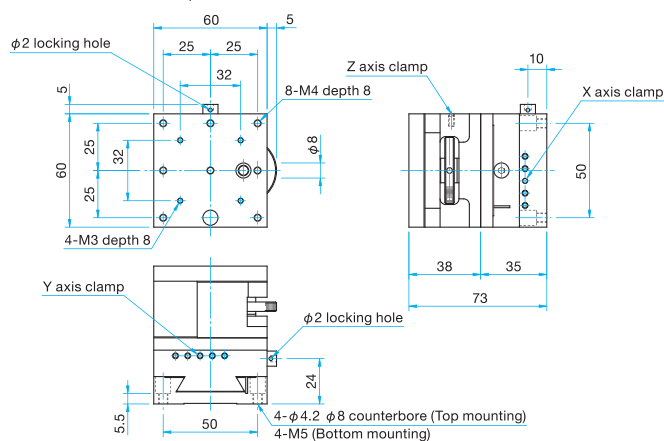
MLT25-40

- Pan head screw M3×8...4 screws, One 3mm hex wrench with knob, One 1.5mm hex wrench
 Wrench size for adjustment XY axes=3mm, Wrench size for clamp common to XYZ axes=1.5mm



MLT25-60

- Hexagonal socket head cap screw M4×10...4 screws, One 3mm hex wrench with knob, One 1.5mm hex wrench
 XY axes=Wrench size for adjustment 3mm, Z axis=Adjustment hole size ϕ 3mm
 Wrench size for clamp common to XYZ axes=1.5mm



Application Systems

Machine Vision

Manual Positions

Motion Control Products

Optical & Mirror Holder

F A Parts

Measurement & Control

FA Electrical Parts

Tool & Measure

Cleanroom & AntiStatic

Index

X Axis

XY Axis

Z Axis

XZ Axis

XYZ Axis

Rotation

Goniometers /Tilt

Multiaxis

Linear Guide

□15mm

□25mm

□40mm

□50mm

□60mm

□70mm

□80mm

□100mm

□120mm

Others