

XYZ axis Steel Extended Contact Slide Stages

MLT35-100/120 Stage size □100/□120mm

RoHS

Application Systems

Machine Vision

Manual Positions

Motion Control Products

Optical & Mirror Holder

F A Parts

Measurement & Control

FA Electrical Parts

Tool & Measure

Cleanroom & AntiStatic

Index

X Axis

XY Axis

Z Axis

XZ Axis

XYZ Axis

Rotation

Goniometers /Tilt

Multiaxis

Linear Guide

□15mm

□25mm

□40mm

□50mm

□60mm

□70mm

□80mm

□100mm

□120mm

Others



Guide

- ▶ The part number suffix FP indicates products with fine-pitch screws instead of standard micrometers.
- ▶ Fine Pitch screws have a screw pitch of 0.25mm and require a hex wrench or the optional hex wrench with knob (NSC) for adjustment.

Reference H010



SPEC UP

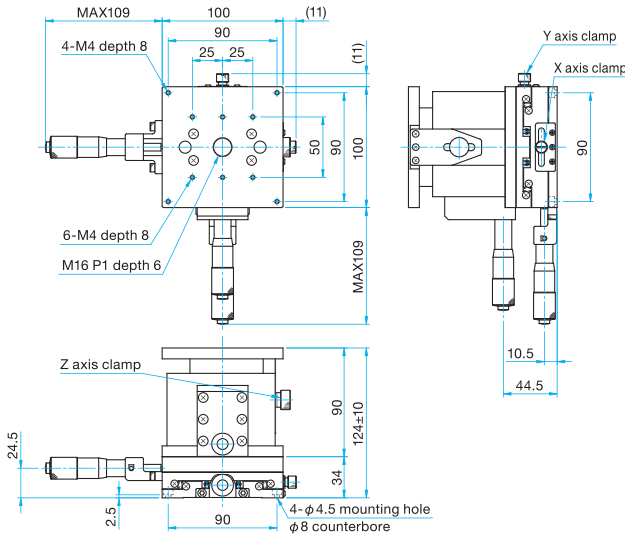
Specifications							
Part Number		MLT35-100C	MLT35-100CFP	MLT35-100S	MLT35-100SFP	MLT35-120C	MLT35-120S
Table Size [mm]		100×100	100×100	100×100	100×100	120×120	120×120
Micrometer Position		Center	Center	Side	Side	Center	Side
Travel [mm]		XY axis ±12.5 Z axis ±10	XY axis ±12.5 Z axis ±10	XY axis ±12.5 Z axis ±10	XY axis ±12.5 Z axis ±10	XY axis ±20 Z axis ±10	XY axis ±20 Z axis ±10
Lead of Actuator [mm/rotation]		0.5	0.25	0.5	0.25	0.5	0.5
Micrometer Readable Resolution [mm]		0.01	—	0.01	—	0.01	0.01
Positioning Slide		Extended contact ball guide	Extended contact ball guide	Extended contact ball guide	Extended contact ball guide	Extended contact ball guide	Extended contact ball guide
Primary Material		Steel	Steel	Steel	Steel	Steel	Steel
Finish		Super black chrome	Super black chrome	Super black chrome	Super black chrome	Super black chrome	Super black chrome
Load Capacity [N]		245 (25.0kgf)	39.2 (4.0kgf)	245 (25.0kgf)	39.2 (4.0kgf)	245 (25.0kgf)	245 (25.0kgf)
Travel Accuracy	Straightness [μm]	2.5	2.5	2.5	2.5	2.5	2.5
	Pitch [N·m]	9.8	9.8	9.8	9.8	9.8	9.8
Max. Moment Capacity	Roll [N·m]	9.8	9.8	9.8	9.8	9.8	9.8
	Pitch [°/N·cm]	0.45	0.45	0.45	0.45	0.41	0.41
Moment Stiffness	Roll [°/N·cm]	0.45	0.45	0.45	0.45	0.41	0.41
	Parallelism [μm]	150	150	150	150	150	150
Weight [kg]		6.1	6.1	6.1	6.1	7.3	7.3

Configuration							
Part Number		MLT35-100C	MLT35-100CFP	MLT35-100S	MLT35-100SFP	MLT35-120C	MLT35-120S
Z axis		MLT33-100	MLT33-100FP	MLT33-100	MLT33-100FP	MLT33-120	MLT33-120
XY axis		MLT32-100C	MLT32-100CFP	MLT32-100S	MLT32-100SFP	MLT32-120CH	MLT32-120SH

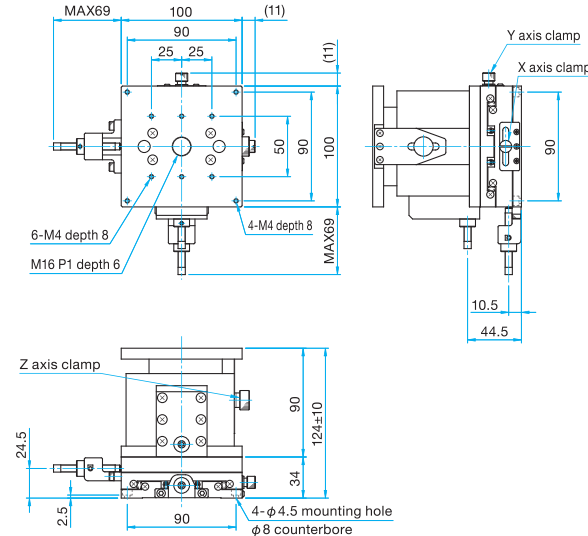


Outline Drawing

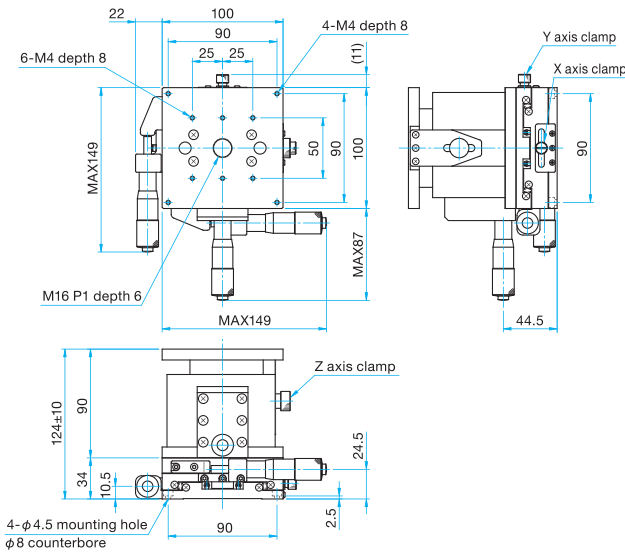
MLT35-100C Hexagonal socket head cap screw M4x8...4 screws



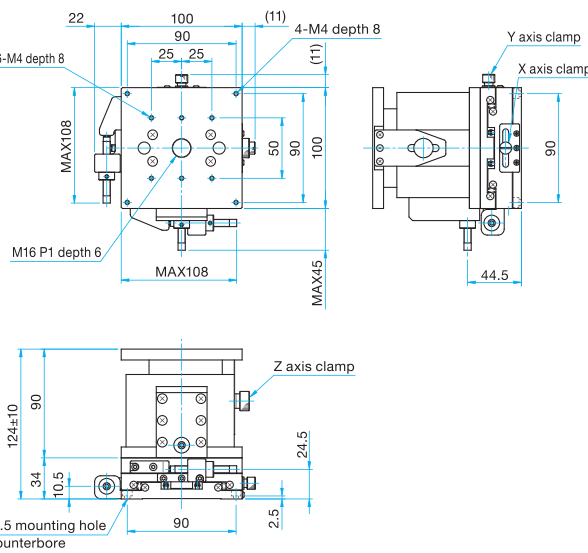
MLT35-100CFP Hexagonal socket head cap screw M4x8...4 screws 3mm



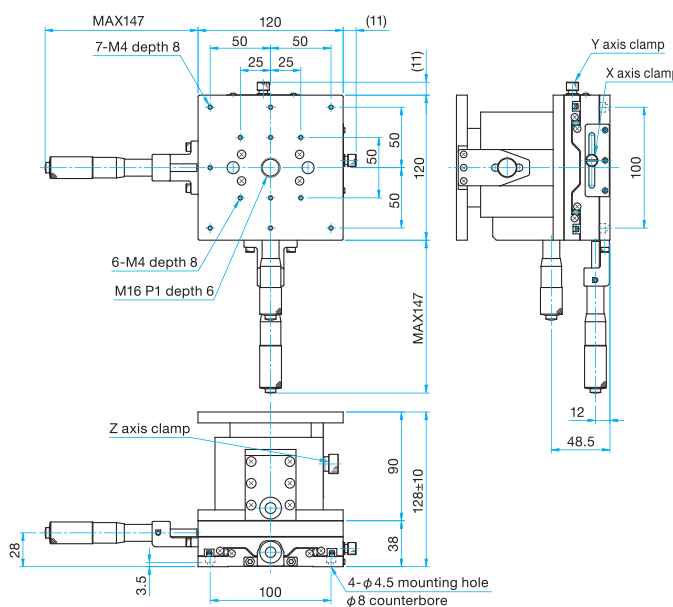
MLT35-100S Hexagonal socket head cap screw M4x8...4 screws



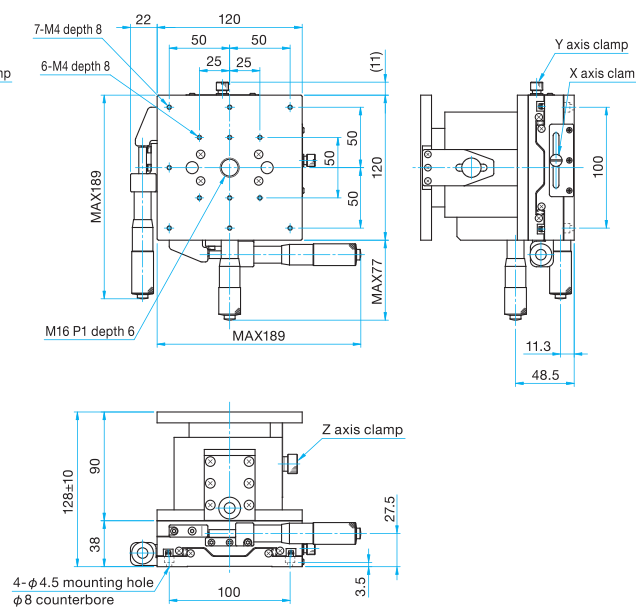
MLT35-100SFP Hexagonal socket head cap screw M4x8...4 screws 3mm



MLT35-120C Hexagonal socket head cap screw M4x8...4 screws



MLT35-120S Hexagonal socket head cap screw M4x8...4 screws



Application Systems

Machine Vision

Manual Positions

Motion Control Products

Optical & Mirror Holder

F A Parts

Measurement & Control

FA Electrical Parts

Tool & Measure

Cleanroom & AntiStatic

Index

X Axis

XY Axis

Z Axis

XZ Axis

XYZ Axis

Rotation

Goniometers /Tilt

Multiaxis

Linear Guide

□15mm

□25mm

□40mm

□50mm

□60mm

□70mm

□80mm

□100mm

□120mm

Others