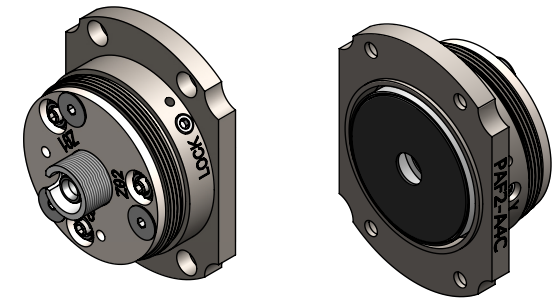
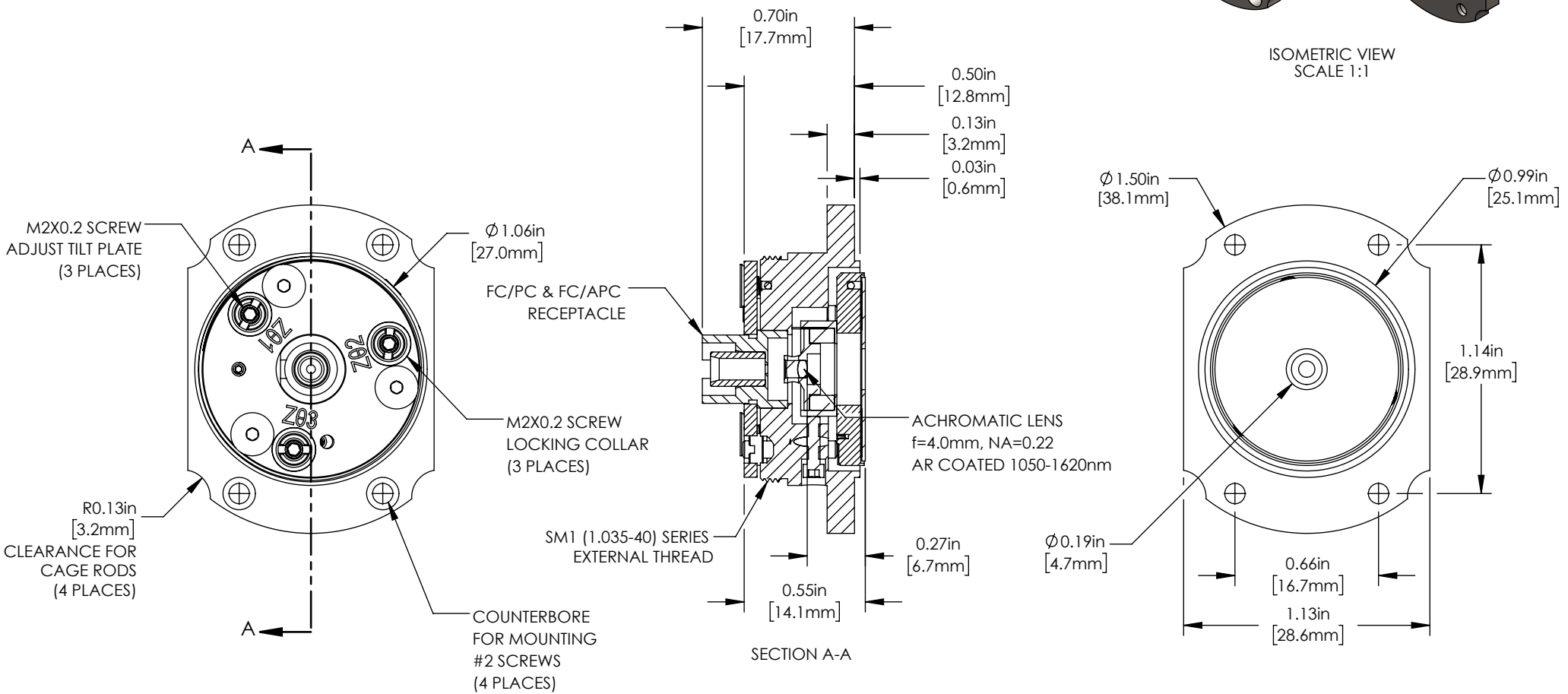


SPECIFICATIONS

INPUT MFD FROM SMF-28-J9 FIBER*	OUTPUT 1/e ² WAIST DIAMETER*	MAX WAIST DISTANCE*	DIVERGENCE*	LENS CLEAR APERTURE
10.4 μm	0.76 mm	150 mm	2.600 mrad	1.8 mm



ISOMETRIC VIEW
SCALE 1:1



NOTES:
FIBERPORT IS FACTORY ALIGNED FOR APPROX. COLLIMATION AT 1310nm.

- INCLUDED BUT NOT SHOWN:
- DUST CAP
 - 0.028" HEX KEY
 - 0.050" HEX KEY
 - 0-80 LOCKING SCREW
 - SPW403 SPANNER FOR LOCKING COLLARS

FOR INFORMATION ONLY
NOT FOR MANUFACTURING PURPOSES

DRAWING PROJECTION				 www.hours-web.com	
	NAME	DATE			
DRAWN		09/08/17		FIBERPORT, FC/PC & APC, f=4.0 mm, 1050 - 1620 nm, Ø0.76 mm WAIST	
APPROVAL		02/14/20		MATERIAL	REV
				N/A	C
VALUES IN PARENTHESIS ARE CALCULATED AND MAY CONTAIN ROUND OFF ERRORS				ITEM #	APPROX WEIGHT
				PAF2-A4C	0.09 kg