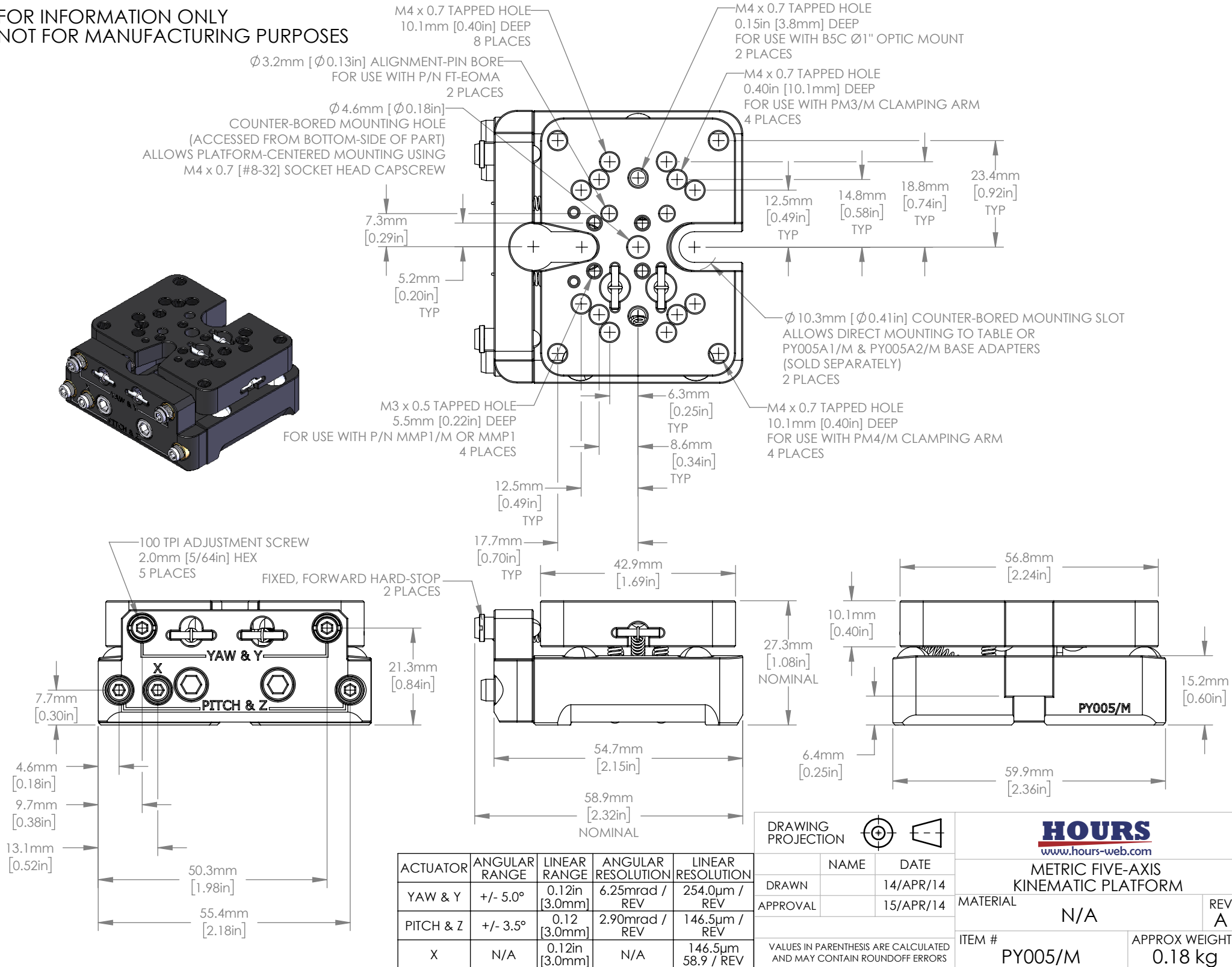
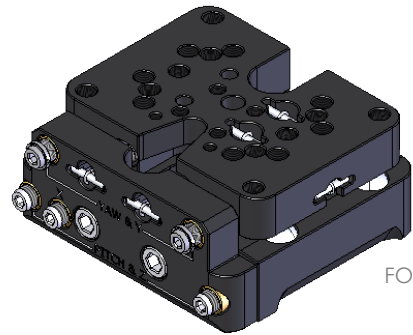


**FOR INFORMATION ONLY
NOT FOR MANUFACTURING PURPOSES**



ACTUATOR	ANGULAR RANGE	LINEAR RANGE	ANGULAR RESOLUTION	LINEAR RESOLUTION
YAW & Y	+/- 5.0°	0.12in [3.0mm]	6.25mrad / REV	254.0µm / REV
PITCH & Z	+/- 3.5°	0.12 [3.0mm]	2.90mrad / REV	146.5µm / REV
X	N/A	0.12in [3.0mm]	N/A	146.5µm 58.9 / REV

DRAWING PROJECTION

	NAME	DATE
DRAWN		14/APR/14
APPROVAL		15/APR/14

VALUES IN PARENTHESIS ARE CALCULATED AND MAY CONTAIN ROUND OFF ERRORS

HOURS
www.hours-web.com

METRIC FIVE-AXIS
KINEMATIC PLATFORM

MATERIAL N/A

ITEM # PY005/M

APPROX WEIGHT 0.18 kg

REV A