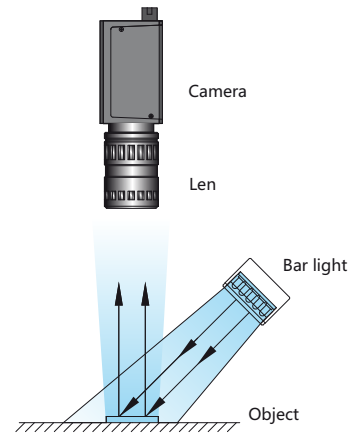


Bar light source series



Product feature

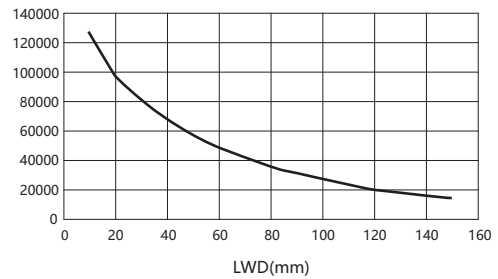
- Flexible size design
- Irradiation angle can be adjusted according to testing requirements
- Custom color selection and combination
- Optional diffuse plate to make light diffusion uniformity

Application

- Wide field lighting preferred
- Various character recognition
- Various appearance inspection
- Various damage and defect inspection
- QR codes, one-dimension code barcode reading
- Inspection the component on substrates
- mint-mark on the metal surface
- Uniform irradiate at high angles
- Extraction feature at low angle

Illuminance graph

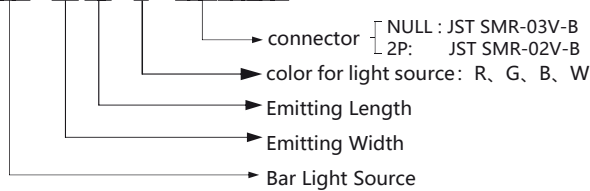
BTL-32135-W



BTL No.

Bar light source(BTL- Series)

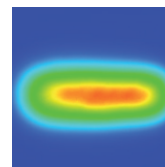
BTL - 12 45 - R - 2P(option)



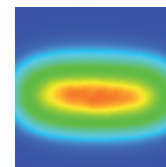
Uniform chart of light source

BTL#: BTL-32135-W

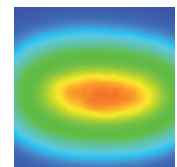
FOV: 160×160mm



LWD=50mm



LWD=80mm



LWD=120mm

Wave length/color temp	Red	620-630 nm	IR	850-940 nm
	Blue	465-475 nm	UV	365-405 nm
	White	6000-6500K	Green	520-530 nm
Storage environment	Temperature	-20-60°C	Humidity	20-85%RH(Non-condensation)
Using environment		0-40°C		
Option accessories	Extension cable, Diffuse plate			
Controller	DLTC-24-8 (The selected controller should match the power of the light source)			
Service life	When the environment at 25°C, the red color works continuously for 60000 hours with 50% illumination,the decrement at 50% When the environment at 25°C, the white color works continuously for 30000 hours with 50% illumination,the decrement at 50%			
Quality assurance	BTL products shipped out within 1 year, the fault not caused by personal reason, will provide free maintenance or replacement services			

Bar light source Series

Specification

Item	BTL#	Color	Power(W)		lamp bead Rows	Light cable	Overall size(mm)			Recommended controller
			R	G/B/W			L	W	H	
1	BTL-1245-R\G\B\W	●●●○	0.8	1.2	2	1	57	18	27	DLTC-24-8
2	BTL-2245-R\G\B\W	●●●○	1.6	2.4	4	1	57	28	27	DLTC-24-8
3	BTL-3245-R\G\B\W	●●●○	2.4	3.6	6	1	57	38	27	DLTC-24-8
4	BTL-1290-R\G\B\W	●●●○	1.6	2.4	2	1	102	18	27	DLTC-24-8
5	BTL-2290-R\G\B\W	●●●○	3.2	4.8	4	1	102	28	27	DLTC-24-8
6	BTL-3290-R\G\B\W	●●●○	4.8	7.1	6	1	102	38	27	DLTC-24-8
7	BTL-12135-R\G\B\W	●●●○	2.4	3.6	2	1	147	18	27	DLTC-24-8
8	BTL-22135-R\G\B\W	●●●○	4.8	7.1	4	1	147	28	27	DLTC-24-8
9	BTL-32135-R\G\B\W	●●●○	7.1	11	6	1	147	38	27	DLTC-24-8
10	BTL-12180-R\G\B\W	●●●○	3.2	4.8	2	1	192	18	27	DLTC-24-8
11	BTL-22180-R\G\B\W	●●●○	6.3	9.5	4	1	192	28	27	DLTC-24-8
12	BTL-32180-R\G\B\W	●●●○	9.5	15	6	1	192	38	27	DLTC-24-8
13	BTL-12225-R\G\B\W	●●●○	4	5.9	2	1	237	18	27	DLTC-24-8
14	BTL-22225-R\G\B\W	●●●○	7.9	12	4	1	237	28	27	DLTC-24-8
15	BTL-32225-R\G\B\W	●●●○	12	18	6	1	237	38	27	DLTC-24-8
16	BTL-12270-R\G\B\W	●●●○	4.8	7.1	2	1	282	18	27	DLTC-24-8
17	BTL-22270-R\G\B\W	●●●○	9.5	15	4	1	282	28	27	DLTC-24-8
18	BTL-32270-R\G\B\W	●●●○	15	22	6	1	282	38	27	DLTC-24-8
19	BTL-12315-R\G\B\W	●●●○	5.5	8.3	2	1	327	18	27	DLTC-24-8
20	BTL-22315-R\G\B\W	●●●○	11	17	4	1	327	28	27	DLTC-24-8
21	BTL-32315-R\G\B\W	●●●○	17	25	6	1	327	38	27	DLTC-24-8
22	BTL-12360-R\G\B\W	●●●○	6.3	9.5	2	1	372	18	27	DLTC-24-8
23	BTL-22360-R\G\B\W	●●●○	13	19	4	1	372	28	27	DLTC-24-8
24	BTL-32360-R\G\B\W	●●●○	19	29	6	1	372	38	27	DLTC-24-8
25	BTL-12405-R\G\B\W	●●●○	7.1	11	2	1	417	18	27	DLTC-24-8
26	BTL-22405-R\G\B\W	●●●○	15	22	4	1	417	28	27	DLTC-24-8
27	BTL-32405-R\G\B\W	●●●○	22	32	6	1	417	38	27	DLTC-24-8
28	BTL-12450-R\G\B\W	●●●○	8	12	2	1	462	18	27	DLTC-24-8
29	BTL-22450-R\G\B\W	●●●○	16	24	4	1	462	28	27	DLTC-24-8
30	BTL-32450-R\G\B\W	●●●○	24	36	6	1	462	38	27	DLTC-24-8
31	BTL-12495-R\G\B\W	●●●○	8.8	13.2	2	1	507	18	27	DLTC-24-8
32	BTL-22495-R\G\B\W	●●●○	17.6	26.4	4	1	507	28	27	DLTC-24-8
33	BTL-32495-R\G\B\W	●●●○	26.4	44	6	1	507	38	27	DLTC-24-8
34	BTL-12540-R\G\B\W	●●●○	9.6	14.4	2	1	552	18	27	DLTC-24-8
35	BTL-22540-R\G\B\W	●●●○	19.2	28.8	4	1	552	28	27	DLTC-24-8
36	BTL-32540-R\G\B\W	●●●○	28.8	43.2	6	1	552	38	27	DLTC-24-8
37	BTL-12585-R\G\B\W	●●●○	11	16	2	1	597	18	27	DLTC-24-8
38	BTL-22585-R\G\B\W	●●●○	21	32	4	1	597	28	27	DLTC-24-8
39	BTL-32585-R\G\B\W	●●●○	32	47	6	1	597	38	27	DLTC-24-8
40	BTL-12630-R\G\B\W	●●●○	12	17	2	1	642	18	27	DLTC-24-8
41	BTL-22630-R\G\B\W	●●●○	22.4	33.6	4	1	642	28	27	DLTC-24-8
42	BTL-32630-R\G\B\W	●●●○	33.6	50.4	6	1	642	38	27	DLTC-24-8

Specification

Item	BTL#	Color	Power(W)		lamp bead Rows	Light cable	Overall size(mm)			Recommended controller
			R	G/B/W			L	W	H	
43	BTL-12675-R\G\B\W	●●●○	12	18	2	1	687	18	27	DLTC-24-8
44	BTL-22675-R\G\B\W	●●●○	24	36	4	1	687	28	27	DLTC-24-8
45	BTL-32675-R\G\B\W	●●●○	36	54	6	1	687	38	27	DLTC-24-8
46	BTL-12720-R\G\B\W	●●●○	12.8	19.2	2	1	732	18	27	DLTC-24-8
47	BTL-22720-R\G\B\W	●●●○	26	39	4	1	732	28	27	DLTC-24-8
48	BTL-32720-R\G\B\W	●●●○	39	58	6	1	732	38	27	DLTC-24-8
49	BTL-12765-R\G\B\W	●●●○	13.6	20.4	2	1	777	18	27	DLTC-24-8
50	BTL-22765-R\G\B\W	●●●○	27.2	40.8	4	1	777	28	27	DLTC-24-8
51	BTL-32765-R\G\B\W	●●●○	40.8	61.2	6	1	777	38	27	DLTC-24-8
52	BTL-12810-R\G\B\W	●●●○	15	22	2	1	822	18	27	DLTC-24-8
53	BTL-22810-R\G\B\W	●●●○	29	44	4	1	822	28	27	DLTC-24-8
54	BTL-32810-R\G\B\W	●●●○	44	65	6	1	822	38	27	DLTC-24-8
55	BTL-12855-R\G\B\W	●●●○	15.2	22.8	2	1	867	18	27	DLTC-24-8
56	BTL-22855-R\G\B\W	●●●○	30.4	45.6	4	1	867	28	27	DLTC-24-8
57	BTL-32855-R\G\B\W	●●●○	45.6	68.4	6	1	867	38	27	DLTC-24-8
58	BTL-12900-R\G\B\W	●●●○	16	24	2	1	912	18	27	DLTC-24-8
59	BTL-22900-R\G\B\W	●●●○	32	48	4	1	912	28	27	DLTC-24-8
60	BTL-32900-R\G\B\W	●●●○	48	72	6	1	912	38	27	DLTC-24-8
61	BTL-12945-R\G\B\W	●●●○	16.8	25.5	2	1	957	18	27	DLTC-24-8
62	BTL-22945-R\G\B\W	●●●○	30	50.4	4	1	957	28	27	DLTC-24-8
63	BTL-32945-R\G\B\W	●●●○	50.4	76	6	1	957	38	27	DLTC-24-8
64	BTL-12990-R\G\B\W	●●●○	17.6	26.4	2	1	1002	18	27	DLTC-24-8
65	BTL-22990-R\G\B\W	●●●○	35	52.4	4	1	1002	28	27	DLTC-24-8
66	BTL-32990-R\G\B\W	●●●○	52.8	79.2	6	2	1002	38	27	DLTC-24-8
67	BTL-121035-R\G\B\W	●●●○	18.4	27.6	2	1	1047	18	27	DLTC-24-8
68	BTL-221035-R\G\B\W	●●●○	36.8	55.2	4	1	1047	28	27	DLTC-24-8
69	BTL-321035-R\G\B\W	●●●○	55.2	82.8	6	2	1047	38	27	DLTC-24-8
70	BTL-121080-R\G\B\W	●●●○	19.2	28.8	2	1	1092	18	27	DLTC-24-8
71	BTL-221080-R\G\B\W	●●●○	38.4	57.6	4	1	1092	28	27	DLTC-24-8
72	BTL-321080-R\G\B\W	●●●○	57.6	86.4	6	2	1092	38	27	DLTC-24-8
73	BTL-121125-R\G\B\W	●●●○	20	30	2	1	1137	18	27	DLTC-24-8
74	BTL-221125-R\G\B\W	●●●○	40	60	4	1	1137	28	27	DLTC-24-8
75	BTL-321125-R\G\B\W	●●●○	60	90	6	2	1137	38	27	DLTC-24-8
76	BTL-121170-R\G\B\W	●●●○	20.8	31.2	2	1	1182	18	27	DLTC-24-8
77	BTL-221170-R\G\B\W	●●●○	41.6	62.4	4	1	1182	28	27	DLTC-24-8
78	BTL-321170-R\G\B\W	●●●○	62.4	93.6	6	2	1182	38	27	DLTC-24-8
79	BTL-121215-R\G\B\W	●●●○	21.6	32.4	2	1	1227	18	27	DLTC-24-8
80	BTL-221215-R\G\B\W	●●●○	43.2	64.8	4	1	1227	28	27	DLTC-24-8
81	BTL-321215-R\G\B\W	●●●○	65	97.2	6	2	1227	38	27	DLTC-24-8
82	BTL-121260-R\G\B\W	●●●○	22.4	33.6	2	1	1272	18	27	DLTC-24-8
83	BTL-221260-R\G\B\W	●●●○	44.8	67.2	4	1	1272	28	27	DLTC-24-8
84	BTL-321260-R\G\B\W	●●●○	67.2	100.8	6	2	1272	38	27	DLTC-24-8

Bar light source Series

Specification

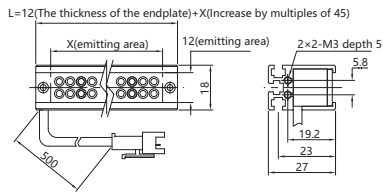
Item	BTL#	Color	Power(W)		lamp bead Rows	Light cable	Overall size(mm)			Recommended controller
			R	G/B/W			L	W	H	
85	BTL-121305-R\G\B\W	●●●○	23.2	34.8	2	1	1317	18	27	DLTC-24-8
86	BTL-221305-R\G\B\W	●●●○	46.4	69.6	4	1	1317	28	27	DLTC-24-8
87	BTL-321305-R\G\B\W	●●●○	69.6	104.4	6	2	1317	38	27	DLTC-24-8
88	BTL-121350-R\G\B\W	●●●○	24	36	2	1	1362	18	27	DLTC-24-8
89	BTL-221350-R\G\B\W	●●●○	48	72	4	1	1362	28	27	DLTC-24-8
90	BTL-321350-R\G\B\W	●●●○	72	108	6	2	1362	38	27	DLTC-24-8
91	BTL-121395-R\G\B\W	●●●○	24.8	37.2	2	1	1407	18	27	DLTC-24-8
92	BTL-221395-R\G\B\W	●●●○	49.6	74.4	4	1	1407	28	27	DLTC-24-8
93	BTL-321395-R\G\B\W	●●●○	74.4	111.6	6	2	1407	38	27	DLTC-24-8
94	BTL-121440-R\G\B\W	●●●○	25.6	38.4	2	1	1452	18	27	DLTC-24-8
95	BTL-221440-R\G\B\W	●●●○	51.2	76.8	4	1	1452	28	27	DLTC-24-8
96	BTL-321440-R\G\B\W	●●●○	76.8	115.2	6	2	1452	38	27	DLTC-24-8
97	BTL-121485-R\G\B\W	●●●○	26.4	39.6	2	1	1497	18	27	DLTC-24-8
98	BTL-221485-R\G\B\W	●●●○	52.8	79.2	4	2	1497	28	27	DLTC-24-8
99	BTL-321485-R\G\B\W	●●●○	79.2	118.8	6	2	1497	38	27	DLTC-24-8
100	BTL-121530-R\G\B\W	●●●○	27.2	40.8	2	1	1542	18	27	DLTC-24-8
101	BTL-221530-R\G\B\W	●●●○	54.5	81.6	4	2	1542	28	27	DLTC-24-8
102	BTL-321530-R\G\B\W	●●●○	81.6	122.4	6	2	1542	38	27	DLTC-24-8
103	BTL-121575-R\G\B\W	●●●○	28	42	2	1	1587	18	27	DLTC-24-8
104	BTL-221575-R\G\B\W	●●●○	56	84	4	2	1587	28	27	DLTC-24-8
105	BTL-321575-R\G\B\W	●●●○	84	126	6	2	1587	38	27	DLTC-24-8
106	BTL-121620-R\G\B\W	●●●○	28.8	43.2	2	1	1632	18	27	DLTC-24-8
107	BTL-221620-R\G\B\W	●●●○	57.6	86.4	4	2	1632	28	27	DLTC-24-8
108	BTL-321620-R\G\B\W	●●●○	86.4	129.6	6	2	1632	38	27	DLTC-24-8
109	BTL-121665-R\G\B\W	●●●○	29.6	44.4	2	1	1677	18	27	DLTC-24-8
110	BTL-221665-R\G\B\W	●●●○	59.2	88.8	4	2	1677	28	27	DLTC-24-8
111	BTL-321665-R\G\B\W	●●●○	88.8	133.2	6	2	1677	38	27	DLTC-24-8
112	BTL-121710-R\G\B\W	●●●○	30.4	45.6	2	1	1722	18	27	DLTC-24-8
113	BTL-221710-R\G\B\W	●●●○	60.8	91.2	4	2	1722	28	27	DLTC-24-8
114	BTL-321710-R\G\B\W	●●●○	91.2	136.8	6	2	1722	38	27	DLTC-24-8
115	BTL-121755-R\G\B\W	●●●○	31.2	46.8	2	1	1767	18	27	DLTC-24-8
116	BTL-221755-R\G\B\W	●●●○	62.4	93.6	4	2	1767	28	27	DLTC-24-8
117	BTL-321755-R\G\B\W	●●●○	93.6	140.4	6	2	1767	38	27	DLTC-24-8
118	BTL-121800-R\G\B\W	●●●○	32	48	2	1	1812	18	27	DLTC-24-8
119	BTL-221800-R\G\B\W	●●●○	64	96	4	2	1812	28	27	DLTC-24-8
120	BTL-321800-R\G\B\W	●●●○	96	144	6	2	1812	38	27	DLTC-24-8
121	BTL-121845-R\G\B\W	●●●○	32.8	49.2	2	1	1857	18	27	DLTC-24-8
122	BTL-221845-R\G\B\W	●●●○	65.6	98.4	4	2	1857	28	27	DLTC-24-8
123	BTL-321845-R\G\B\W	●●●○	98.4	147.6	6	2	1857	38	27	DLTC-24-8
124	BTL-121890-R\G\B\W	●●●○	33.6	50.4	2	1	1902	18	27	DLTC-24-8
125	BTL-221890-R\G\B\W	●●●○	67.2	100.8	4	2	1902	28	27	DLTC-24-8
126	BTL-321890-R\G\B\W	●●●○	100.8	151.2	6	2	1902	38	27	DLTC-24-8

Bar light source Series

Product dimension drawing(mm)

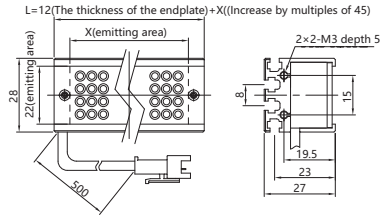
BTL-12

1



BTL-22

2



BTL-32

3

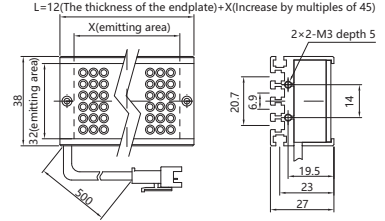
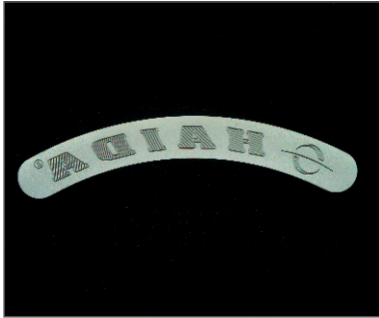
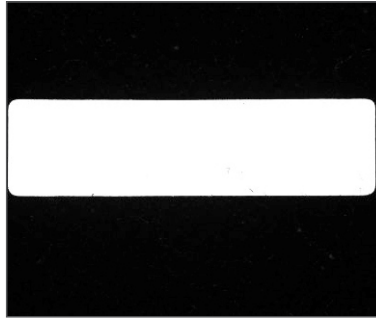


Image cases



BTL-32225-W

Character inspection for metal parts



BTL-3290-W

Film positioning inspection



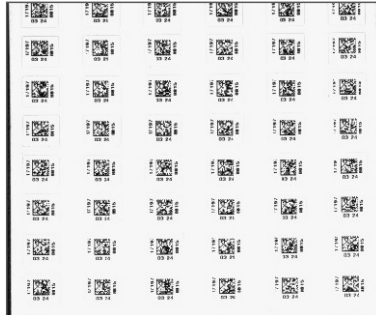
BTL-32135-R

Paper character inspection

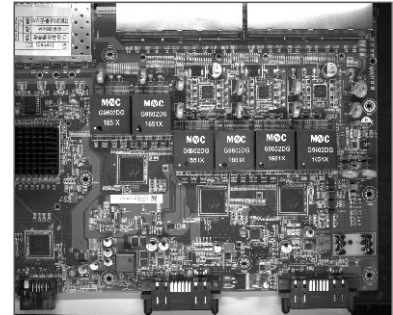


BTL-32405-W

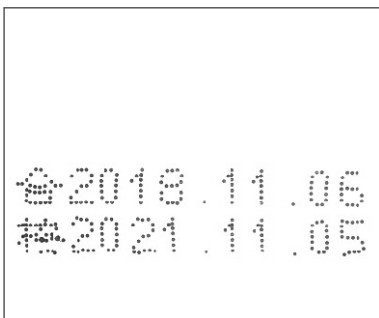
Character detection



BTL-32135-W QR
code inspection



BTL-32180-W Polarity
inspection for



BTL-32225-B

Date code inspection



BTL-32225-W

Serial number identification



BTL-32270-R

Bread positioning