

LED lighting instructions

Type	Polarized spot light source
Model	PT3-5BPL
Color	Blue
Wave length/Color temp	460-475nm
Input voltage	5 V
Current consumption (max)	0.68 A
Power consumption (max)	3.4W
Brightness (refer value)	
Weight	43.1 g (±10%)
Aging shell temperature (refer value)	0°C (±10%)
Input connector	SMR-03V-B
Input port	1. 2.LED+ 3.LED-
Cooling method	
Service life	The attenuation of red for 60,000 hours does not exceed 50%, white and blue for 30,000 hours does not exceed 50%
Using environment	Temp 0 ~ 40°C Humidity 20 ~ 85% RH (with no condensation)
Storage environment	Temp -20 ~ 60°C Humidity 20 ~ 85% RH (with no condensation)
Dimension	Refer to the product dimension drawing
Remark	

1

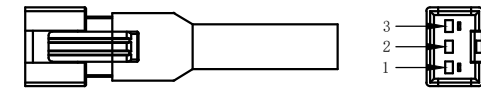
2

3

4

5

JST SMR-03V-B



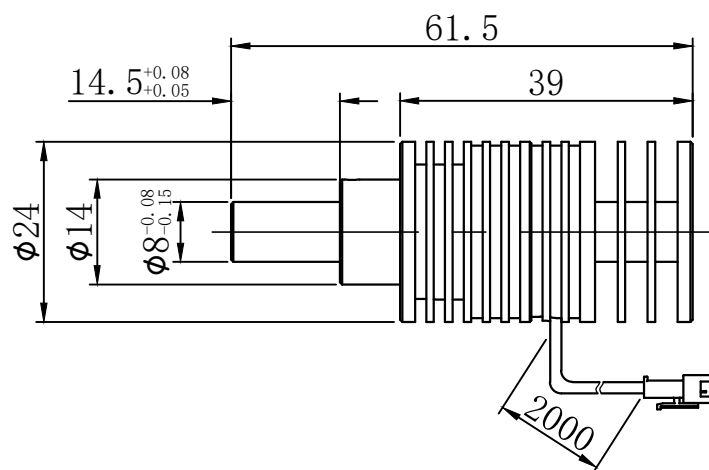
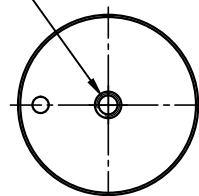
Cores	+/-
1	NC
2	+
3	-

Cable model

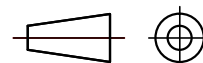
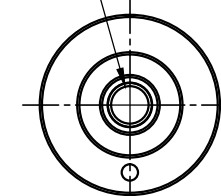
SM24-Lx (x means cable length: 1/3/5)

unit:mm

M3 depth 5



∅5 (emitting area)



Model

PT3-5BPL

Product dimension drawing

Recommended controller

Designer

Version

1.0

Description

Spot light source

CCS Series ; HOURS Series

GGP

Date

2021-10-12

Scale

1:1

Weight

HOURS
www.hours-shop.com