



## INDUSTRIAL/MACHINE VISION APPLICATIONS

Part Number: CFGM-200M/C-1

### SMALL PACKAGE, POWERFUL RESULTS

The BFS-PGE-19S4 leverages the 2 MP IMX430 a third generation Sony Pregius global shutter CMOS sensor with 4.5 um pixel and improved saturation capacity and dynamic range. The IMX430 maintains a similar optical format and pixel size as the ICX274 and is much faster with much improved absolute sensitivity threshold, read noise, quantum efficiency and dynamic range.

The Blackfly S Gige camera family offers high performance machine vision cameras that allow designers to easily produce the exact images they need. With both automatic and precise manual control over image capture and on-camera pre-processing, the Blackfly S Gige cameras accelerate application development.

### FEATURES

#### THE LATEST CMOS SENSORS

Choice of CMOS global shutter, polarization, and high-sensitivity BSI sensors.

#### IMPROVE CYCLE TIMES

Automate more with advanced camera controls, event notifications, chunk data, counters and timers.

#### ACCELERATE YOUR TIME TO MARKET

FLIR's GenICam3 API with GUI library, and detailed event logging is supported by comprehensive documentation.

### APPLICATIONS

AUTOMATED OPTICAL INSPECTION  
MICROSCOPY

ROBOT GUIDANCE

METROLOGY

## SPECIFICATIONS

SPECS	CFGM-200M-1	CFGM-200C-1
Resolution	1616 x 1240	
Frame Rate*	60 FPS	
Megapixels	2.0 MP	
Chroma	Mono	Color
Sensor	Sony IMX430, CMOS, 1/1.7"	
Readout Method	Global shutter	
Pixel Size	4.5 $\mu$ m	
Lens Mount	C-mount	
ADC	12-bit	
Minimum Frame Rate**	1 FPS	
Gain Range**	0 to 47 dB	
Exposure Range**	14 us to 30 s	
Acquisition Modes	Continuous, Single Frame, Multi Frame	
Partial Image Modes	Pixel binning, decimation, ROI	
Image Processing	Gamma, lookup table, and sharpness	Color correction matrix, gamma, lookup table, saturation, and sharpness
Sequencer	Up to 8 sets using 6 features	
Image Buffer	240 MB	
User Sets	2 user configuration sets for custom camera settings	
Flash Memory	6 MB non-volatile memory	
Opto-isolated I/O	1 input, 1 output	
Non-isolated I/O	1 bi-directional, 1 input	
Serial Port	1 (over non-isolated I/O)	
Auxiliary Output	3.3 V, 120 mA maximum	
Interface	GigE	
Power Requirements	Power over Ethernet (PoE); or 12 V nominal (8 - 24 V)	
Power Consumption	3 W maximum (2.8 W nominal)	
Dimensions/Mass	29 mm x 29 mm x 39 mm / 53 g	
Machine Vision Standard	GigE Vision v1.2	
Compliance	CE, FCC, KCC, RoHS, REACH. The ECCN for this product is: EAR099.	
Temperature	Operating: 0°C to 50°C Storage: -30°C to 60°C	
Humidity	Operating: 20% to 80% (no condensation) Storage: 30% to 95% (no condensation)	
Warranty	3 years	

\*Frame rates are measured with Device Link Throughput Limit of 125 MBps and Acquisition Frame Rate disabled. Values are rounded down to whole numbers.

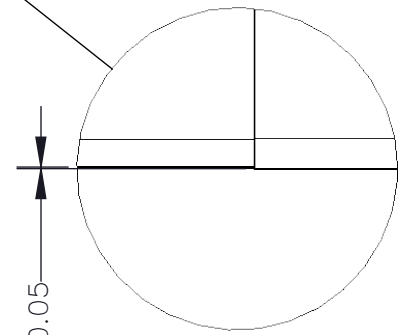
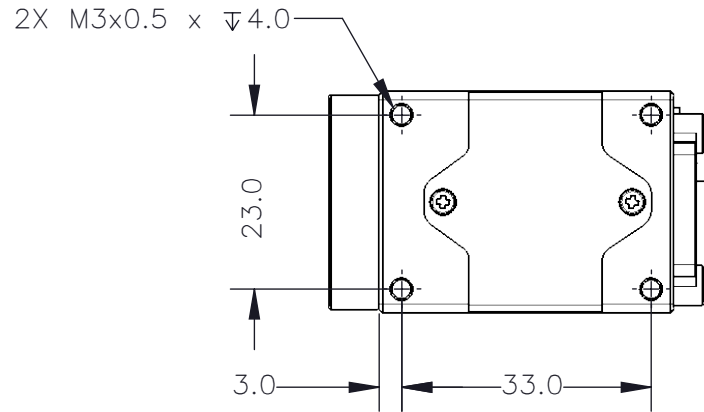
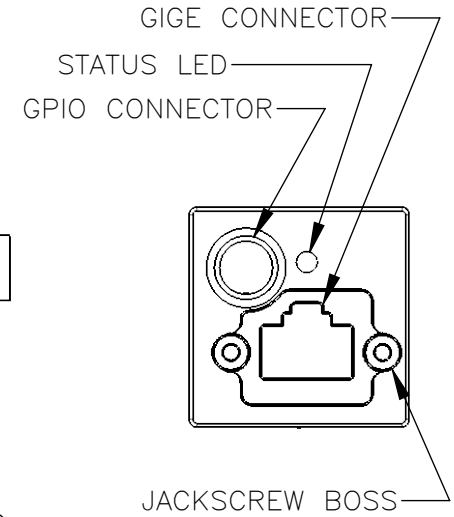
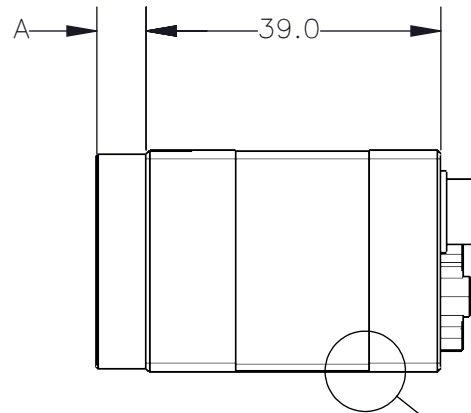
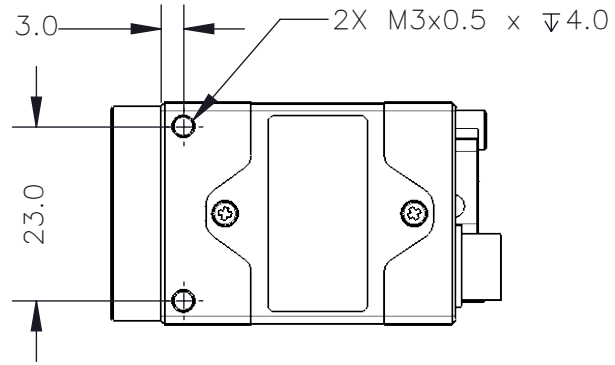
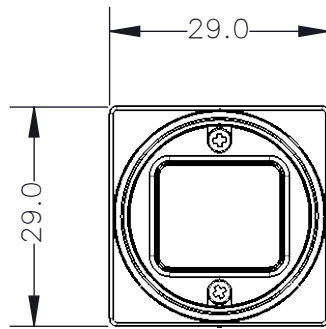
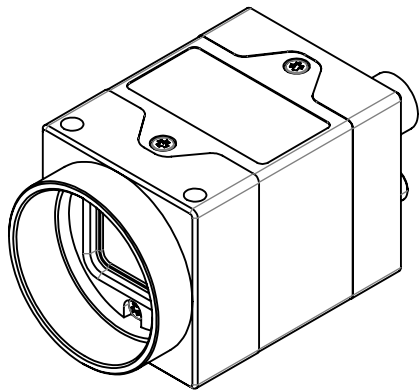
\*\*Values are the same in binning and no binning modes.

**HOURS**  
www.hours-shop.com



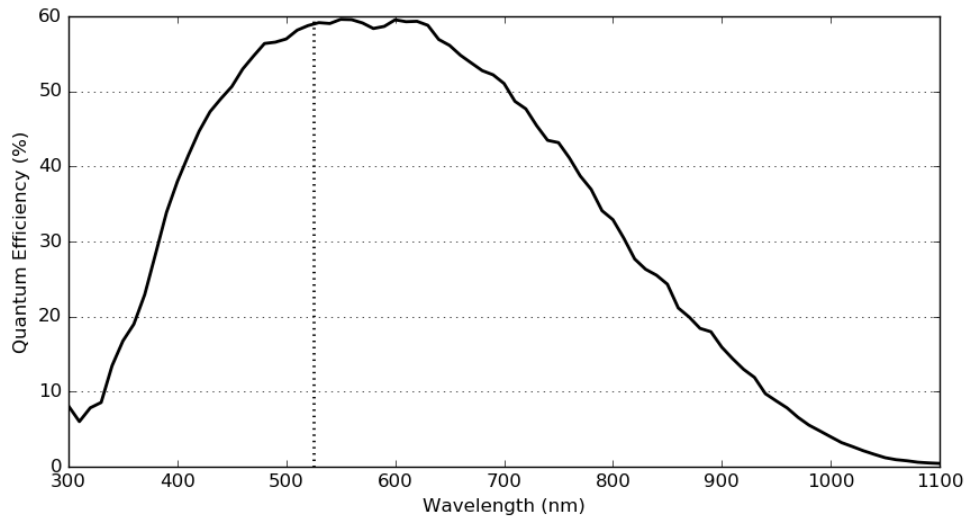
REVISIONS

REV.	DESCRIPTION	DATE DONE	DONE BY	CHECKED BY
0	INITIAL RELEASE	04.MAR.19	GUS	DANIEL



BARREL LENGTH – "A" (+0.10/-0.15)		
SENSOR	C-MOUNT	CS-MOUNT
IMX421	6.5	—
IMX422	6.5	—
IMX425	6.5	—
IMX428	6.5	—
IMX429	6.5	—
IMX430	6.5	—
IMX432	6.5	—

## CFGM-200M-1



## CFGM-200C-1

