

Enormous Field of View

Features

Hardware

- Compact footprint
- 15" x 6" X, Y travel
- Optional 18" X axis travel
- Motorized X, Y stages
- Helix motion - $\pm 7.5^\circ$ degrees
- 4.0" constant working distance
- 10.75" throat clearance

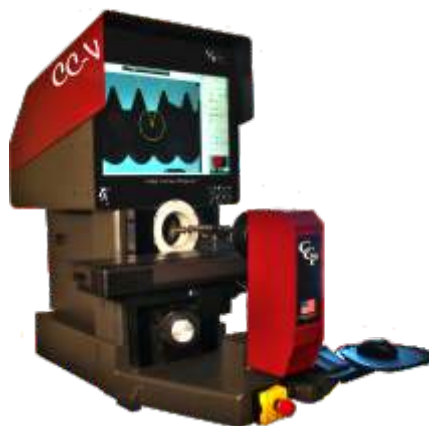
Optics & Illumination

- Fully telecentric, long depth of field
- 3" field of view
- 6 position instantaneous magnification change
- All LED lighting with continuously variable intensity
- Profile light, Square-On Surface Light (TTL)
- Optional single color ring light
- QVI® megapixel, digital camera

Controls & Software

- Standard 22" Touch-Screen monitor, keyboard, mouse and CPU controller stand
- Optional auxiliary second monitor for easier programming
- Measure-X® 2D dimensional measurement software
- Manual, semi-automatic or fully automatic operation
- Optional CAD Import feature
- Comparator Mode graphical dimensional analysis feature

The World's Most Capable Horizontal Video Contour Projector



The CC-V horizontal Video Contour Projector

CC-V measures everything in its enormous front lens viewing area. The exclusive telecentric optical system provides a large field of view with extra-long depth of field to enable accurate measurements of a wide range of parts.

Proven Design

The CC-V is built on the rock solid 16" benchtop comparator base which features molded composite construction for stability even in harsh environments. Superb mechanics and a unique optical system and advanced digital camera system ensure high accuracy.

Optics & Illumination

CC-V features an exclusive telecentric optical system that produces crisp, accurate images with a 3" diagonal field of view and 3" depth of field.

CC-V has two standard TruLight® light sources- a green LED back light, and a white LED square-on surface light. Both sources have continuously variable intensity control with a convenient adjustment knob on the control panel, and another control

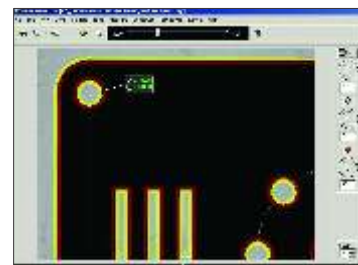
inside the Measure-X software. As an option, an oblique dark field LED ring light can be added, providing the ultimate in flexibility for imaging surface features.

The digital, megapixel camera is designed specifically for high accuracy measurement in industrial environments, so you can be assured of accurate, stable performance over the long haul.

Zoom-Anywhere™ in the large field of view with guaranteed accuracy - no need to move and center the part.

Measure-X Software

Measure-X 2D is a complete, easy to use measurement software. Measure-X allows you to make simple manual measurements, or to program fully automatic routines that can be run by operators with minimal training. Measure-X offers a choice of CAD based, on-line sample part program set-up, or off-line programming. A CAD overlay superimposed on the video image allows easy visual confirmation of actual dimensions compared to the CAD design.



Live image with Comparator Mode graphical output

Technical Specifications

CC-V

Optical	Screen Size Optical System Field of View Size Depth of Field Working Distance Throat Clearance Magnification	22" diagonal Telecentric, fixed lens, constant working distance 3" to 0.375" diagonal; in six discrete steps ± 1.5" (low mag) to 0.187" (high mag) 4.0" 10.75" 6 position, instantaneous magnification change
Mechanical	XY Motion XYZ Travel Optional XY Travel XY Positioning XY Scale Resolution Worktable Helix Motion System Dimensions (approx DWH) Weight (approx)	Motorized, with 2-axis joystick control and fine adjustment control in the X & Y axis 15" x 6" x 2" Extended X axis travel - 18" Precision, with heavy duty substage for vertical motion and focus control 0.00004" Hardcoat anodized aluminum with fixturing slot, 20" x 4.75", 60 lb capacity ±7.5° with pivoting worktable assembly and zero stop 37" x 20" x 40" 500 lbs
Illumination (TruLight®)	Standard Illumination Optional Illumination	Green LED back light and white LED through-the-lens surface light with continuously variable intensity control LED oblique (dark field) green ring light with eight selectable patterns
Software	Standard Software Optional Software	Measure-X® 2D full function measurement software MeasureFit®, SmartReport®, QC-Calc™, SmartTree™, CAD import option for Measure-X 2D, Measure-X 2D offline
Power Requirements		115/230VAC, 50/60 Hz, 1 , 350W
Options		Dual Monitor User Interface Bar code reader Fixture and calibration accessories PSR Precision Stepper Rotary Overhead light shield Heavy duty steel weldment stand Ergonomic, motorized adjustable height stand CE mark available for systems delivered to Europe Service and support contracts
Warranty		Full parts and labor warranty for 1-year.