

Rotary Cross Clamps Cross Clamps

CRHN
CCHN

CRHN

RoHS

Application Systems

Optics & Optical Coatings

Opto-Mechanics

Bases

Manual Stages

Actuators & Adjusters

MotORIZED Stages

Light Sources & Laser Safety

Index

Guide

Vibration Isolation Systems

Optical Tables

Darkrooms/
Dark Boxes

Optical Bases

Posts

Brackets

Adapters

Tools

Rotary cross clamps connect two posts/poles at an arbitrary angle.

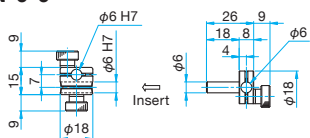
- The split clamp structure provides strong clamping force.



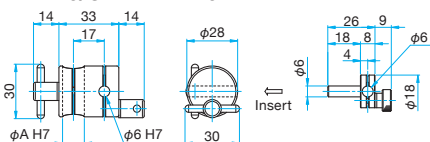
Specifications		Primary material: Aluminum Finish: Black Anodized
Part Number		Weight [kg]
CRHN-6-6		0.032
CRHN-12-6		0.078
CRHN-12.7-6		0.078
CRHN-12-12		0.1
CRHN-12.7-12.7		0.1
CRHN-20-12		0.167
CRHN-20-20		0.196

Outline Drawing

CRHN-6-6

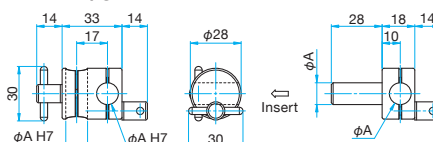


CRHN-12-6/CRHN-12.7-6



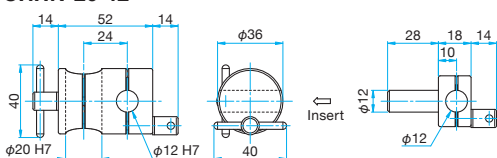
Part Number	A (mm)
CRHN-12-6	12
CRHN-12.7-6	12.7

CRHN-12-12/CRHN-12.7-12.7

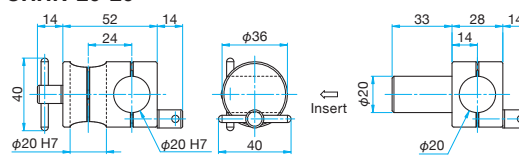


Part Number	A (mm)
CRHN-12-12	12
CRHN-12.7-12.7	12.7

CRHN-20-12



CRHN-20-20



CCHN

RoHS

Cross clamps connect two posts/poles at right angles.

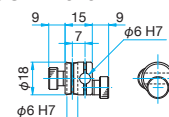
- The split clamp structure provides strong clamping force.



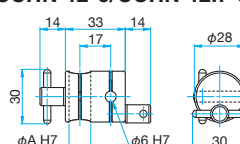
Specifications		Primary material: Aluminum Finish: Black Anodized
Part Number		Weight [kg]
CCHN-6-6		0.021
CCHN-12-6		0.065
CCHN-12.7-6		0.065
CCHN-12-12		0.06
CCHN-12.7-12.7		0.06
CCHN-20-12		0.128
CCHN-20-20		0.11

Outline Drawing

CCHN-6-6

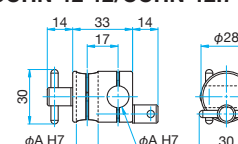


CCHN-12-6/CCHN-12.7-6



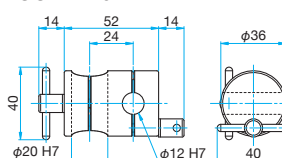
Part Number	A (mm)
CCHN-12-6	12
CCHN-12.7-6	12.7

CCHN-12-12/CCHN-12.7-12.7



Part Number	A (mm)
CCHN-12-12	12
CCHN-12.7-12.7	12.7

CCHN-20-12



CCHN-20-20

