



USB  
3.0

USB 3.0 is the next major revision to the Universal Serial Bus standard. This new revision promises higher data transfer rates (up to 4.8Gbps) with increased maximum bus power and is backwards compatible to USB 2.0.

PART NUMBER : ITC-U**3**·**X**·**X**·**X**·**( )**·**M**

### Select Connector Type: End "1"

- Type A Friction Fit = 1
- Straight MICRO-B Exit with Thumbscrews = 2
- MICRO-B R/A **UP** w/Recessed Screws = 3
- MICRO-B R/A **DOWN** w/Recessed Screws = 4
- MICRO-B Exit Right w/Recessed Screws = 5
- MICRO-B Exit Left w/Recessed Screws = 6
- Type A with Thumbscrews = 7
- Type B with Thumbscrews = 8
- Type B Friction Fit = 9
- Type A Receptacle Friction Fit = 10
- Type A Receptacle w/Threaded Inserts = 11
- Type B w/Threaded Inserts = 12

### Cable Type Options:

- STATIC = 1
- (10 million times) ROBOTIC = 2

### Select Connector Type: End "2"

- Type A Friction Fit = 1
- Straight MICRO-B Exit with Thumbscrews = 2
- MICRO-B R/A **UP** w/Recessed Screws = 3
- MICRO-B R/A **DOWN** w/Recessed Screws = 4
- MICRO-B Exit Right w/Recessed Screws = 5
- MICRO-B Exit Left w/Recessed Screws = 6
- Type A with Thumbscrews = 7
- Type B with Thumbscrews = 8
- Type B Friction Fit = 9
- Type A Receptacle Friction Fit = 10
- Type A Receptacle w/Threaded Inserts = 11
- Type B w/Threaded Inserts = 12

### Option: Length in Meters

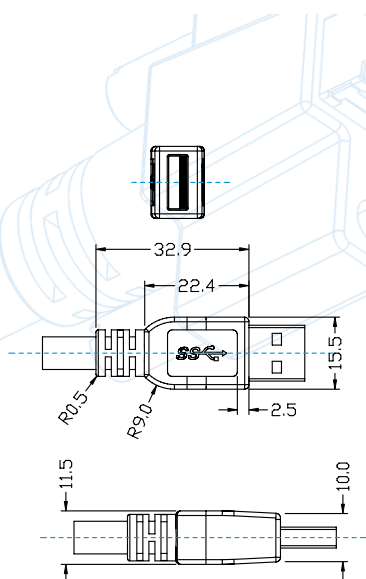
REV. C

## CONNECTOR TYPE OPTIONS:

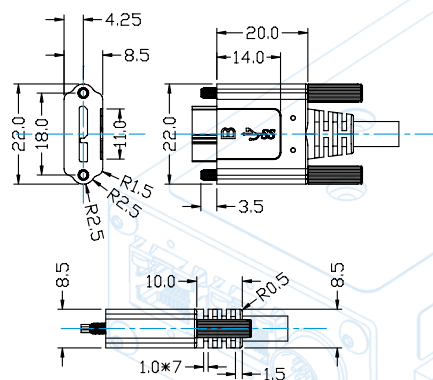


See page 34 – 35 for profile drawings.

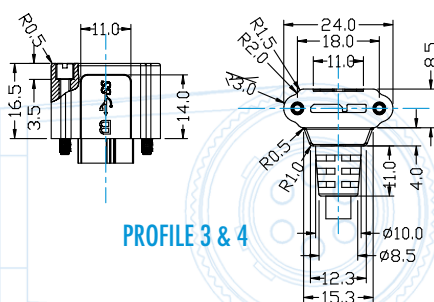
REV. C



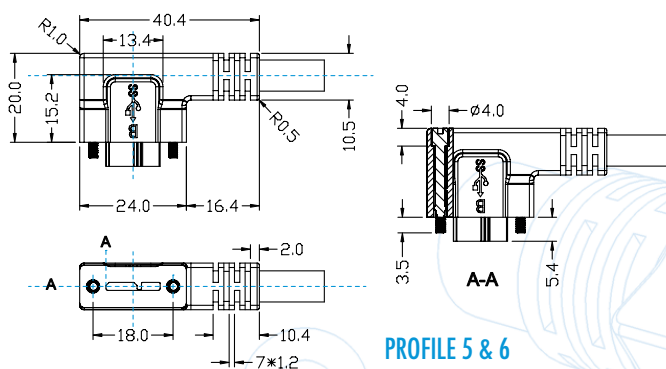
PROFILE 1



PROFILE 2

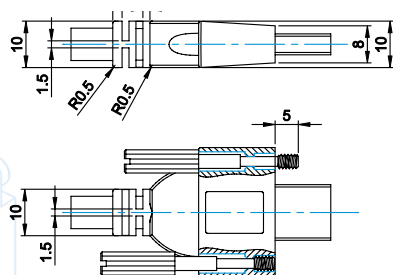


PROFILE 3 & 4

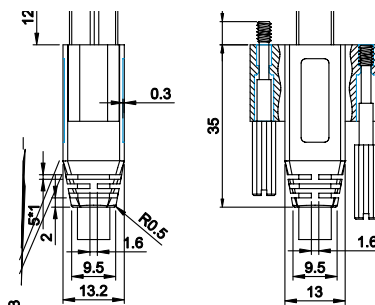


PROFILE 5 & 6

REV. C

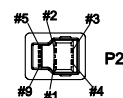


PROFILE 7

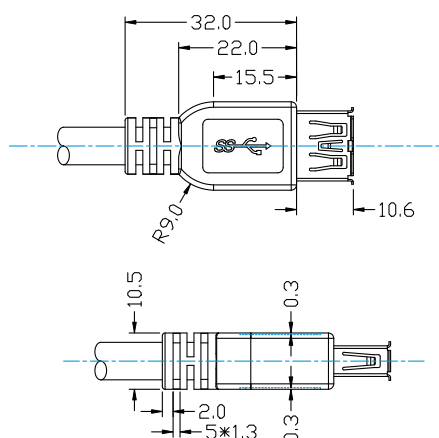


PROFILE 8

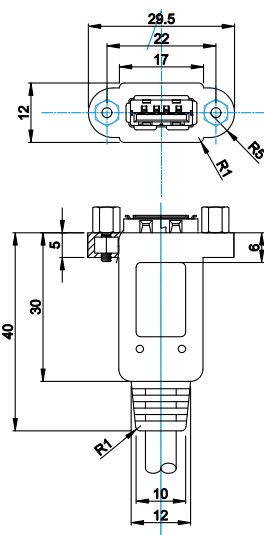
USB 3.0 B MALE



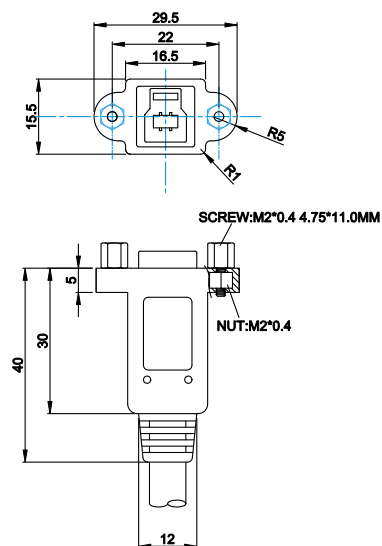
PROFILE 9



PROFILE 10

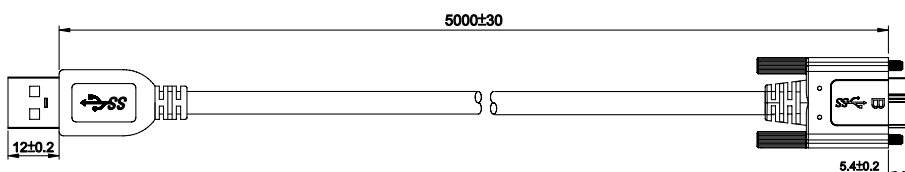
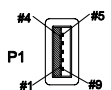


PROFILE 11

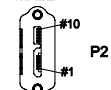


PROFILE 12

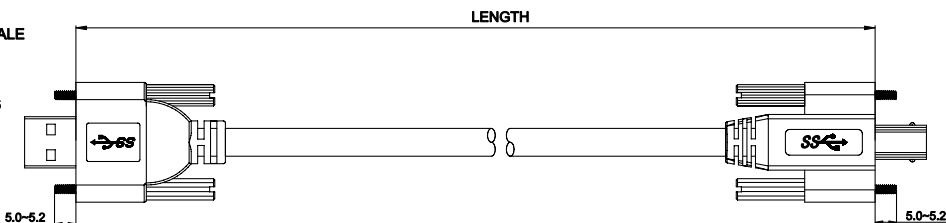
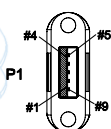
USB 3.0 A MALE



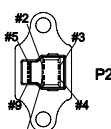
USB3.0  
MICRO-B  
MALE



USB 3.0 A MALE



USB 3.0 B MALE



REV. C